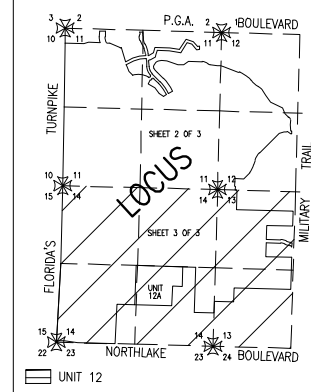


No.	TYPE	RECORDING DATA	INST. DATE	RECORDING DATE	REMARKS
E-1	WMAE	ORB 6229/1279-1296	08-09-89	10-17-89	BLANKET ACCESS EASEMENT GOLF COURSE PARCELS
E-2	WMAE	ORB 6229/1258-1278	08-09-89	10-17-89	BLANKET ACCESS EASEMENT GOLF COURSE PARCELS
E-3	WMAE	PB 64/67-81		11-08-89	
E-4	"	"	"	"	P/O REL 11547/35-37
E-5	"	"	"	"	"
E-6	"	"	"	"	"
E-7	"	"	"	"	"
E-8	"	"	"	"	P/O REL 11547/32-34
E-9	"	"	"	"	P/O REL 11547/38-40
E-10	"	"	"	"	"
E-11	"	"	"	"	"
E-12	"	"	"	"	WMAE ALSO IN PART IN UNIT 12
E-13	"	"	"	"	"
E-14	WMAE	PB 81/37-38			
E-15	WMAE	PB 81/103-108			
E-16	SCAE	"	"	"	TRACT GC-1 ALSO A WMAE
E-17	"	"	"	"	TRACT GC-3 ALSO A WMAE
E-18	"	"	"	"	TRACT GC-2 ALSO A WMAE
E-19	"	"	"	"	TRACT GC-4 ALSO A WMAE
E-20	"	"	"	"	TRACT GC-5 ALSO A WMAE
E-21	"	"	"	"	TRACT GC-6 ALSO A WMAE
E-22	"	"	"	"	TRACT GC-7 ALSO A WMAE
E-23	"	"	"	"	TRACT GC-8 ALSO A WMAE
E-24	"	"	"	"	TRACT GC-9 ALSO A WMAE
E-25	"	"	"	"	TRACT GC-10 ALSO A WMAE
E-26	SCAE	ORB 69/195-200			TRACT GC-11 ALSO A WMAE
E-27	IEE	PB 83/53-54			TRACT R-3
E-28	"	"	"	"	IEE ALSO IN PART IN UNIT 12 TRACT R-4
E-29	"	"	"	"	TRACT R-5
E-30	"	PB 64/67-81		11-08-89	TRACT R-6
E-31	IEE	PB 65/119-121		12-18-89	TRACT R-7
E-32	WMAE	PB 64/67-81		11-08-89	REVISED TO T-18
E-33	"	"	"	"	REVISED TO T-19
E-34	"	"	"	"	WMAE ALSO IN UNIT 12 ALSO AN IEE
E-35	"	"	"	"	"
E-36	"	"	"	"	"
E-37	"	"	"	"	"
E-38	"	"	"	"	"
E-39	"	"	"	"	"
E-40	"	"	"	"	"
E-41	"	"	"	"	"
E-42	"	PB 64/67-81		11-08-89	WMAE / UNIT 12 P/O REL 8782/748,8809/107
E-43	"	ORB 1362/143	04-07-86	04-20-86	WMAE / UNIT 12 P/O REL 8782/748,8809/107
E-44	"	"	"	"	WMAE ALSO IN UNIT 12
E-45	"	"	"	"	WMAE IN PART OUTSIDE UNIT ALSO IN UNIT 12
E-46	WMAE	ORB 1362/143	04-07-86	04-20-86	WMAE OUTSIDE UNIT ALSO IN UNIT 12
E-47	WMAE	ORB 5650/770-777	04-11-88	04-27-88	WMAE ALSO IN UNIT 12 OUTFALL UNIT 12A
E-48	WMAE	PB 69/195-200		12-18-92	PARTIAL RELEASED SEE E-59
E-49	WMAE	PB 69/195-200		12-18-92	"
E-50	WMAE	PB 69/195-200		12-18-92	"
E-51	WMAE	PB 69/195-200		12-18-92	"
E-52	WMAE	PB 69/195-200		12-18-92	"
E-53	IEE	PB 69/195-200		12-18-92	TRACT R-12
E-54	IEE	PB 69/195-200		12-18-92	TRACT R-13
E-55	WMAE	PB 69/195-200		12-18-92	"
E-56	WMAE	PB 69/195-200		12-18-92	"
E-57	WMAE	PB 69/195-200		12-18-92	"
E-58	LE	ORB 7819/1517-1535	07-06-93	07-29-93	LANDSCAPE BUFFER EASEMENT POA BOULEVARD
E-59	WMAE	ORB 8320/374-377	06-22-94	06-24-94	PARTIAL RELEASE E-48 AND ORB 8229/1279
E-60	IEE	PB 73/27-43		07-27-94	TRACT R-14
E-61	"	"	"	"	TRACT R-15
E-62	"	"	"	"	TRACT R-16
E-63	"	"	"	"	TRACT R-18
E-64	IEE	PB 73/27-43		07-27-94	TRACT GC-13 ALSO A CCAE
E-65	WMAE	PB 73/27-43		07-27-94	TRACT GC-14 ALSO A CCAE
E-66	"	"	"	"	TRACT GC-15 ALSO A CCAE
E-67	"	"	"	"	TRACT GC-16 ALSO A CCAE
E-68	"	"	"	"	TRACT GC-17 ALSO A CCAE
E-69	"	"	"	"	TRACT GC-18 ALSO A CCAE
E-70	"	"	"	"	TRACT GC-19 ALSO A CCAE
E-71	"	"	"	"	TRACT GC-20 ALSO A CCAE
E-72	WMAE	PB 73/27-43		07-27-94	PORTION OF GC-16
E-73	WMAE	PB 73/27-43		07-27-94	PORTION OF GC-16
E-74	"	"	"	"	PORTION OF GC-16
E-75	"	"	"	"	PORTION OF GC-15
E-76	"	"	"	"	PORTION OF GC-20
E-77	"	"	"	"	PORTION OF GC-14
E-78	"	"	"	"	PORTION OF GC-15
E-79	"	"	"	"	PORTION OF GC-17
E-80	"	"	"	"	PORTION OF GC-17
E-81	"	"	"	"	PORTION OF GC-17
E-82	"	"	"	"	PORTION OF GC-18
E-83	WMAE	PB 73/27-43		07-27-94	PORTION OF GC-19
E-84	IEE	PB 73/27-43		07-27-94	PORTION OF P-14, PART RELEASE ORB 8579/277-28
E-85	"	"	"	"	PORTION OF ECA-3
E-86	"	"	"	"	PORTION OF ECA-4
E-87	"	"	"	"	PORTION OF ECA-17
E-88	"	"	"	"	PORTION OF ECA-19
E-89	IEE	PB 73/27-43		07-27-94	PORTION OF GC-14
E-90	WMAE	PB 73/27-43		07-27-94	PORTION OF GC-16
E-91	"	"	"	"	PORTION OF GC-11
E-92	WMAE	PB 73/27-43		07-27-94	PORTION OF ECA-16
E-93	IEE	PB 74/53-56		02-01-95	
E-94	IEE	ORB 8711/1221-1223	03-13-99	04-21-99	
E-95	IEE	PB 75/65-67		06-27-95	TRACT R-1
E-96	IEE	PB 75/65-67		06-27-95	TRACT D-1
E-97	IEE	PB 75/65-67		06-27-95	TRACT D-2
E-98	IEE	PB 75/65-67		06-27-95	TRACT D-3
E-99	PB	PB 75/65-67		06-27-95	MAINTENANCE RESPONSIBILITY
E-100	PB	PB 75/65-67		06-27-95	MAINTENANCE RESPONSIBILITY
E-101	IEE	PB 76/43-44		11-14-95	TRACT ECA-1
E-102	IEE	"	"	"	TRACT ECA-2
E-103	WMAE	"	"	"	"
E-104	WMAE	"	"	"	"
E-105	IEE	PB 76/43-44		11-14-95	TRACT R-1
E-106	IEE	PB 76/68-70		11-20-95	TRACT R-1
E-107	IEE	"	"	"	TRACT ECA-3
E-108	WMAE	"	"	"	TRACT ECA-4
E-109	IEE	"	"	"	TRACT ECA-1
E-110	IEE	"	"	"	TRACT ECA-2
E-111	IEE	PB 76/68-70		11-20-95	TRACT A
E-112	IEE	PB 76/73-74		11-20-95	TRACT ECA-1
E-113	IEE	"	"	"	TRACT ECA-2
E-114	IEE	"	"	"	TRACT ECA-2
E-115	WMAE	PB 76/73-74		11-20-95	TRACT B
E-116	WMAE	PB 76/75-76		11-20-95	TRACT B
E-117	IEE	"	"	"	TRACT ECA-4
E-118	IEE	"	"	"	PORTION OF TRACT B
E-119	LE	ORB 8606/774-800	01-25-99	02-02-99	LANDSCAPE BUFFER EASEMENT NORTHLAKE BLVD
E-120	FE	ORB 9322/60-65	04-03-96	06-24-96	POSITIVE OUTFALL FLOWAGE EASEMENT
E-121	IEE	ORB 9322/293-299	08-07-96	08-12-96	ERATOR EASEMENT
E-122	IEE	ORB 9426/1881-1887	08-07-96	08-09-96	ERATOR EASEMENT
E-123	IEE	ORB 9433/839-845	08-28-96	09-09-96	ERATOR EASEMENT
E-124	IEE	PB 77/38-42		04-12-96	TRACT R-1
E-125	WMAE	"	"	"	"
E-126	WMAE	"	"	"	TRACT A
E-127	WMAE	"	"	"	TRACT A
E-128	WMAE	"	"	"	TRACT A
E-129	WMAE	"	"	"	TRACT C
E-130	WMAE	"	"	"	ALSO A WMAE
E-131	IEE	"	"	"	TRACT ECA-6 (ALSO A WMAE)
E-132	IEE	PB 77/38-42		04-12-96	TRACT ECA-5

No.	TYPE	RECORDING DATA	INST. DATE	RECORDING DATE	REMARKS
E-133	WMAE	PB 77/38-42		04-12-96	
E-134	WMAE	"	"	"	TRACT B
E-135	WMAE	"	"	"	
E-136	WMAE	"	"	"	
E-137	WMAE	"	"	"	TRACT GC-1
E-138	WMAE	"	"	"	TRACT GC-2
E-139	WMAE	PB 77/38-42		04-12-96	
E-140	LE	PB 76/3-4		09-10-96	TRACT ECA-2
E-141	IEE	"	"	"	TRACT ECA-3
E-142	IEE	"	"	"	TRACT R-1
E-143	WMAE	"	"	"	TRACT A
E-144	LE	PB 76/3-4		09-10-96	
E-145	IEE	PB 77/36-37		04-12-96	TRACT R-1
E-146	IEE	"	"	"	
E-147	LE	PB 77/36-37		04-12-96	
E-148	IEE	PB 81/37-38		10-15-97	TRACT R-1
E-149	IEE	PB 81/103-108		11-21-97	TRACT R-1
E-150	WMAE	PB 81/103-108		11-21-97	TRACT A
E-151	WMAE	PB 81/103-108		11-21-97	TRACT B
E-152	WMAE	PB 81/103-108		11-21-97	TRACT C
E-153	LE	PB 81/103-108		11-21-97	TRACT ECA-1
E-154	LE	PB 81/103-108		11-21-97	TRACT ECA-3
E-155	LE	PB 81/103-108		11-21-97	TRACT ECA-6
E-156	LE	PB 81/103-108		11-21-97	TRACT ECA-7
E-157	WMAE/IEE	PB 81/103-108		11-21-97	TRACT ECA-7
E-158	IEE	PB 83/53-54		08-14-98	TRACT R-1
E-159	IEE	PB 83/53-54		08-14-98	TRACT ECA-3
E-160	WMAE	PB 83/53-54		08-14-98	TRACT A
E-161	IEE	PB 83/53-54		08-14-98	TRACT ECA-1
E-162	LE	PB 83/53-54		08-14-98	TRACT ECA-2
E-163	LE	PB 83/53-54		08-14-98	TRACT ECA-3
E-164	IEE	PB 83/71-76		09-08-98	TRACT R-1 & R-2
E-165	IEE	PB 83/146-148		11-06-98	TRACT R-1
E-166	WMAE	PB 83/146-148		11-06-98	TRACT A
E-167	LE	PB 83/146-148		11-06-98	TRACT ECA-1
E-168	LE	PB 83/146-148		11-06-98	TRACT ECA-2
E-169	LE	PB 83/146-148		11-06-98	TRACT ECA-3
E-170	WMAE	PB 83/167-170		11-06-98	TRACT GC-1
E-171	IEE	PB 83/167-170		11-18-98	TRACT S
E-172	WMAE	PB 83/167-170		11-18-98	TRACT ECA-5
E-173	WMAE	PB 83/167-170		11-18-98	TRACT ECA-6
E-174	WMAE	PB 83/167-170		11-18-98	TRACT ECA-7
E-175	WMAE	PB 83/167-170		11-18-98	TRACT ECA-8
E-176	WMAE	PB 83/167-170		11-18-98	TRACT R-2
E-177	WMAE	PB 83/167-170		11-18-98	TRACT ECA-5
E-178	WMAE	PB 83/167-170		11-18-98	TRACT ECA-6
E-179	WMAE	PB 83/167-170		11-18-98	TRACT ECA-7
E-180	WMAE	PB 83/167-170		11-18-98	TRACT ECA-8
E-181	WMAE	PB 83/167-170		11-18-98	TRACT ECA-5
E-182	LE	PB 83/185-190		11-25-98	TRACT ECA-5
E-183	LE	PB 83/185-190		11-25-98	TRACT ECA-6
E-184	LE	PB 83/185-190		11-25-98	TRACT ECA-7
E-185	WMAE	PB 83/185-190		11-25-98	TRACT ECA-8
E-186	WMAE	PB 83/185-190		11-25-98	TRACT A
E-187	WMAE	PB 83/185-190		11-25-98	TRACT A
E-188	WMAE	PB 83/185-190		11-25-98	TRACT ECA-5
E-189	WMAE	PB 83/185-190		11-25-98	TRACT GC-1
E-190	WMA				

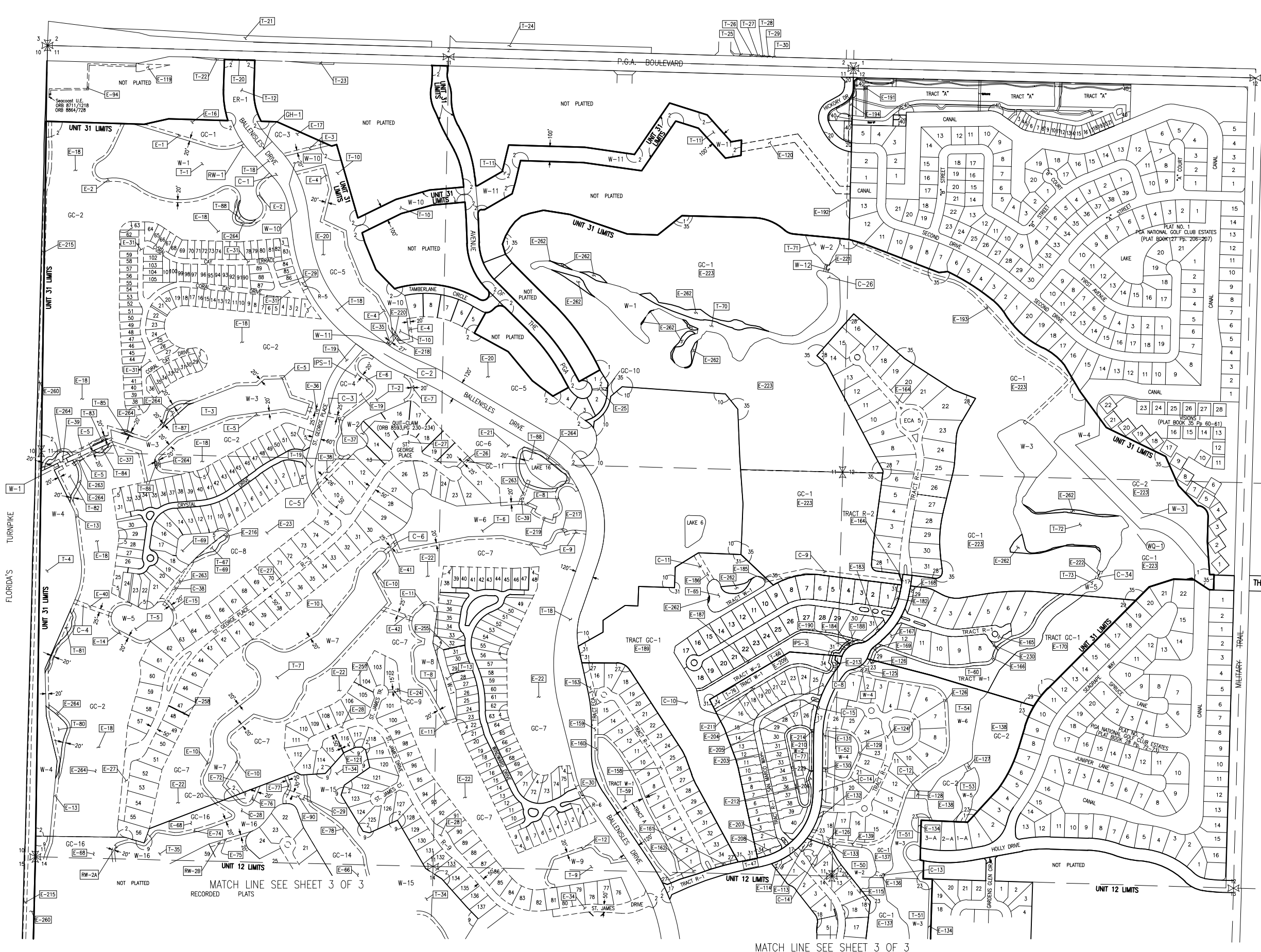
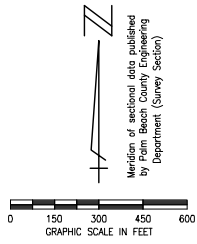


LOCATION MAP
(not to scale)



No.	Plat Book/Pages	Title
1	PB 27/182-183	BOUNDARY OF GOLF CLUB SITE OF THE PROFESSIONAL GOLFERS ASSOCIATION OF AMERICA, (REMAINDER AFTER REPLAT)
2	PB 64/67-81	PLAT ONE HANSEN - JDM
3	PB 64/119-121	PLAT OF CORAL CAY
4	PB 65/129-131	WINDWARD COVE
5	PB 66/18-20	CRYSTAL BAY
9	PB 73/27-43	PLAT THREE, BALLENSLES
10	PB 72/158-159	THE PLAT OF BALLENSLES COUNTRY CLUB
17	PB 76/71-72	PHASE 6 ROADWAY AT BALLENSLES
18	PB 76/73-74	BALLENSLES PARCEL 6B
20	PB 77/122-123	HICKORY DRIVE
23	PB 77/38-42	BALLENSLES POD 9
27	PB 83/53-54	BALLENSLES POD 7
28	PB 83/74-76	BALLENSLES POD 10
29	PB 83/146-148	BALLENSLES POD BA
31	PB 83/185-190	BALLENSLES POD 8B
34	PB 85/100-102	BALLENSLES POD 6A
35	PB 86/70-74	BALLENSLES EAST GOLF COURSE
40	PB 95/103-105	PGA COMMONS PLAT 2
41	PB 95/113-116	BALLENSLES SOUTHWEST AREA

- NOTES:
- SEE SHEET 1 OF 3 FOR LEGEND, NPBCID EASEMENTS, OWNED TRACTS AND FACILITIES INFORMATION.
 - QUIT CLAIM DEED ORB 8593, PG 230-234.
 - BLANKET EASEMENT (ORB 6229/1258-1278) PARTIAL RELEASE RECORDED IN ORB 8824/769-772 (PLAT NOS. 2, 3, 4, 5, 6, 7, 9, 10 & 11).
 - AGREEMENT WITH NPBCID FOR INCLUSION OF THE NOT INCLUDED PARCEL RECORDED IN ORB 11053/1853-1859, 11053/1860-1866, 11053/1867-1873 DATED APRIL 14, 1999.



37	11-17-20	JAF	UPDATE FACILITIES MAP & ADD E-264
35	10-25-17	JAF	ADD T-78 THROUGH T-89; E-262 WME & E-263 DC; C-37, C-38 & C39
33	11-20-13	JAF	REVISE BORDER
32	10-10-04	SW	ADD BALLENSLES SOUTH WEST AREA
31	02-20-06	MCS	NPBCID FACILITIES UPDATE
30	02-17-05	JCD	NPBCID FACILITIES UPDATE
29	01-05-03	STAFF	ADDED T-74, T-75, T-76, AND T-77
28	02-02	STAFF	ADDED EASEMENT E-255 (5' UE)
27	MAR 02	MBS	5 YEAR NPBCID FACILITIES UPDATE; C-19, C-21, C-27, C-28 THRU C-36, W-2, W-7
26	02-19-02	MBS	ADD PLAT 37 THRU PLAT 39, E-225 THRU E-254, RE-239, RE-286, 6229/1258-1278, FULL REL. ORB 15237/645-618
23	06-02-00	JTC	ADD PLAT 35, T-70 THRU T-73, E-221 THRU E-223
22	05-01-00	JTC	ADD E-215 THRU E-220, 1-43 THRU T-69
21	10-10-04	SW	PHOT. RELEASE ORB 11547/32-34, ORB 11547/35-37, ORB 11547/38-40, ORB 11547/81-91, ADD C-27 THRU C-34, MODIFY C-10, W-2 AND W-3
20	08-20-99	TDL	PLAT 33, E-128 THRU E-202, PLAT-34, E-203 THRU E-214
19	01-22-97	AIP	ADD PLAT 25 THRU 32, E-148 THRU E-197, T-56 THRU T-66 AND NOTE 4, 5 YEAR NPBCID FACILITIES UPDATE, ADD IPS-1-4, RW-1,2A,2B, C-7-26, W-4-12, GH-1-3
17	11-11-86	KMB	ADD PLATS 20-24X-120 THRU 147, 16
16	02-14-86	KMB	ADD E-119
15	01-02-86	KMB	ADD PLATS 15-19X-101-118, 43-48
14	12-28-85	MHC	ADD ORB 8809/107,884/728
13	11-07-85	MHC	ADD BLANKET PLATS
11	8-01-85	MHC	Rev. Plat No. 3 Ref. Add Amend ORB 8608/774, Note & Blanket Easement ORB 8824/769
10	6-23-85	KMB	ADD PLAT 11, 12, 13 E-93, 94, T-39, 40, 41
9	4-20-85	AIP	ADD SEACREST UE ORB 8640/262
8	12-21-84	AIP	ADD RELEASE ORB 8579/277-281
7	12-1-84	AIP	ADD QUIT CLAIM DEED ORB 8593/230-234
6	12-21-84	AIP	ADD PLAT NO. 10
5	4-14-84	MHC	SUR. ART. ORB 8439/1430
4	11-07-83	MHC	ADD T-18 THRU T-30, E-58
3	10-7-82	MHC	T-12 AT P.G.A. BLVD.
2	3-20-82	MHC	UNIT BOUNDARY
1	7-26-81	MHC	T-8 EASE, ORB 6884/356-359

SHEET 2 OF 3

NORTHERN PALM BEACH COUNTY IMPROVEMENT DISTRICT
 FACILITIES MAP
 UNIT OF DEVELOPMENT NO. 31
 IN SECTIONS 11, 12, 13 & 14, T. 42 S., R. 42 E.
 PALM BEACH COUNTY, FLORIDA

DATE: 06-15-06

EXHIBIT 31 (2)

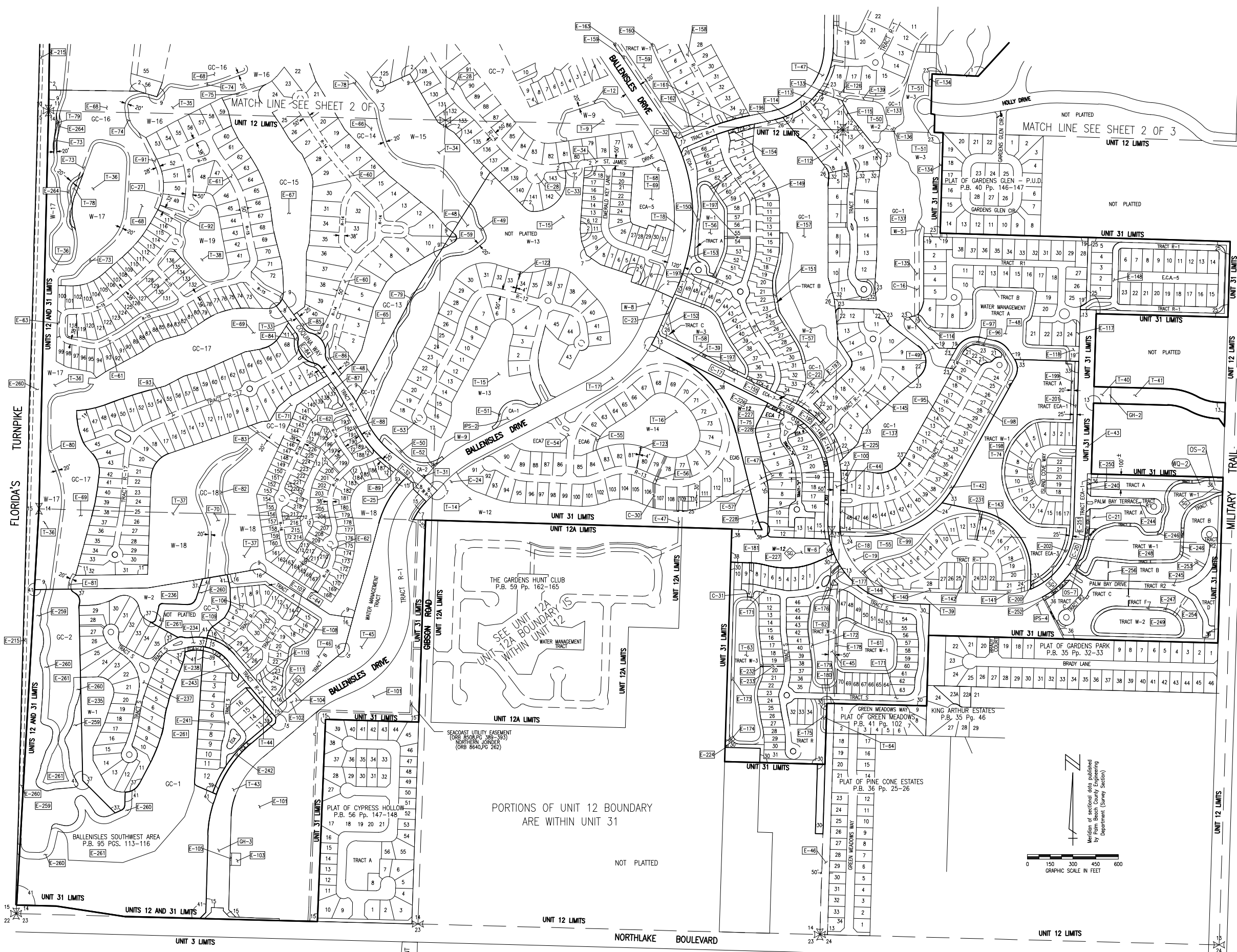
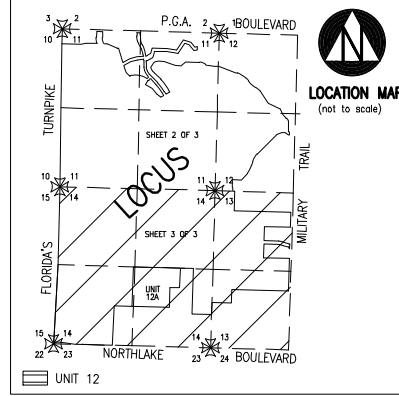
FIELD: --
 DRAWN: SFRN STAFF
 DESIGNED: --
 APPROVED: C.A.R.
 SCALE: AS SHOWN



NORTHERN PALM BEACH COUNTY IMPROVEMENT DISTRICT

Date/Time : Tue, 17 Nov 2020 - 11:06am
 Path Name : C:\Users\jiltzerger\Documents\Jarmes Files\WORK\DWG\59000 NPBCID\UNIT_31\Facilities Map_31.un31rnc02.dwg

INFORMATION SHOWN HEREON DOES NOT CONSTITUTE, NOR DOES IT REPRESENT, A SURVEY OF THE SUBJECT PREMISES.



No.	Plot Book/Pages	Title
2	PB 64/67-81	PLAT ONE HANSEN - JDM
6	PB 66/136-137	EMERALD KEY
7	PB 69/195-200	PLAT TWO HANSEN - JDM
8	PB 72/138-139	COQUINA WAY AT BALLEUSLES
9	PB 73/27-43	PLAT THREE, BALLEUSLES
11	PB 74/53-56	BALLEUSLES P-14 REPLAT
12	PB 74/132-134	SUNSET BAY, PLAT ONE
13	PB 74/194-195	PHASE 4 ROADWAY AT BALLEUSLES
14	PB 75/65-67	PLAT OF BANYAN ISLE AT BALLEUSLES
15	PB 76/43-44	PHASE 5 ROADWAY AT BALLEUSLES
16	PB 76/68-70	BALLEUSLES POD 16B
17	PB 76/71-72	PHASE 4 ROADWAY AT BALLEUSLES
18	PB 76/73-74	BALLEUSLES PARCEL 6B
19	PB 76/75-76	SABAL PINNACLE AT BALLEUSLES
21	PB 77/74-75	REPLAT OF LOTS 22 AND 23 PLAT OF BANYAN ISLE AT BALLEUSLES
22	PB 77/36-37	BALLEUSLES POD 19B
23	PB 77/38-42	BALLEUSLES POD 9
24	PB 78/3-4	VICTORIA BAY AT BALLEUSLES (POD 22)
25	PB 81/37-38	PLAT OF BALLEUSLES POD 25B
26	PB 81/103-108	BALLEUSLES POD 19A
27	PB 83/53-54	BALLEUSLES POD 7
30	PB 83/167-170	BALLEUSLES PODS 20A AND 20B
32	PB 84/46-47	BALLEUSLES - PARCEL 6B REPLAT
33	PB 85/87-99	BALLEUSLES - POD 24
36	PB 89/159-161	BALLEUSLES - POD 23
37	PB 90/150-153	BALLEUSLES - POD 15
38	PB 92/59-61	BALLEUSLES - POD 21
39	PB 92/136-137	BALLEUSLES POD 16A
41	PB 95/113-116	BALLEUSLES SOUTHWEST AREA

- NOTES:
- SEE SHEET 1 OF 3 FOR LEGEND, NPBCID EASEMENTS, OWNED TRACTS AND FACILITIES INFORMATION.
 - QUIT CLAIM DEED ORB 8593, PG 230-234.
 - BLANKET EASEMENT (ORB 6229/1258-1278) PARTIAL RELEASE RECORDED IN ORB 8824/769-772 (PLATS NOS. 2, 3, 4, 5, 6, 7, 9, 10 & 11.)
 - AGREEMENT WITH NPBCID FOR INCLUSION OF THE NOT INCLUDED PARCEL RECORDED IN ORB 11053/1853-1859, 11053/1860-1866, 11053/1867-1873 DATED APRIL 14, 1999.

11-17-20	JAF	UPDATE FACILITIES MAP & ADD E-264
10-25-17	JAF	ADD T-78 THROUGH T-89, E-262 WME & E-263 DEC, C-37, C-38 & C39
11-20-13	JAF	REVISED BORDER
10-10-06	SW	ADDED BALLEUSLES SOUTH WEST AREA
02-20-06	MCB	NPBCID FACILITIES UPDATE
02-17-05	JCD	NPBCID FACILITIES UPDATE
01-06-04	CAR	ADDED T-74, T-75, T-76, AND T-77
MAR 02	MBS	5 YEAR NPBCID FACILITIES UPDATE: C-19, C-21, C-27, C-29 THRU C-36, W-2, W-7
2-19-02	MBS	ADD PLAT 37 THRU PLAT 39, E-225 THRU E-254, REL E-239, REL BIME 6229/1258-1278, FULL REL ORB 13237/845-616
10-11-00	JTC	ADD E-224
5-01-00	JTC	ADD E-215 THRU E-220, T-67 THRU T-69
		PARTIAL RELEASE ORB 11547/32-34,
		ORB 11547/35-37, ORB 11547/38-40,
		ORB 11547/81-91, ADD C-27 THRU C-34,
		MOODY C-10, W-2 AND W-3
21-2-00	TDL	PLAT 33, E-198 THRU E-202,
		PLAT 34, E-203 THRU E-214
8-20-99	TDL	ADD PLATS 25 THRU 32, E-148 THRU E-197, T-56 THRU T-66 AND NOTE 4,
19-1-22-97	AJP	5 YEAR NPBCID FACILITIES UPDATE, ADD
		PS-1-4, RW-1,2A,2B, C-7-26, W-4-12,
		GH-1-3
17-11-96	KMB	ADD PLATS 20-24-E-120 THRU 147, T-49 THRU 55
15-11-06	KMB	ADD PLATS 15-19-E-101-118, T-43-48
12-3-05	KMB	ADD PLAT 14-E-98-100, T-42
10-23-95	KMB	ADD PLAT 11,12,13, E-93,94, T-39,40,41
		ADD SEACAST UE ORB 8711/1221
		ADD RELEASE ORB 8782/748-752
4-20-95	AJP	ADD SEACAST UE ORB 8540/262
		ADD RELEASE ORB 8579/277-281
		ADD QUIT CLAIM DEED ORB 8593/230-234
7-12-94	AJP	ADD PLAT NO. 9 T-60 - 92, T-34 - 38
		SUR. PL. ORB 8439/1430
8-16-94	MHC	ADD E-59, T-31 - T-33 AND PLAT 8
5-4-94	MHC	ADD T-18 THRU T-30, E-58
4-23-93	MHC	ADD PLAT 7, E-48 - 57, T-14 - 17
3-12-92	MHC	PARTIAL RELEASE E-47 ORB 7484/368-375
3-30-92	MHC	UNIT BOUNDARY
1-28-91	MHC	T-8 EASE, ORB 6884/356-359

FIELD: -
 DRAWN: SFRN STAFF
 DESIGNED: -
 APPROVED: C.A.R.
 SCALE: AS SHOWN



NORTHERN PALM BEACH COUNTY IMPROVEMENT DISTRICT
 FACILITIES MAP
 UNIT OF DEVELOPMENT NO. 31
 IN SECTIONS 11, 12, 13 & 14, T. 42 S., R. 42 E.
 PALM BEACH COUNTY, FLORIDA

DATE: 06-15-06
 SHEET 3 OF 3
 EXHIBIT 31 (3)

INFORMATION SHOWN HEREON DOES NOT CONSTITUTE, NOR DOES IT REPRESENT, A SURVEY OF THE SUBJECT PREMISES.

Date/Time : Tue, 1/ Nov 2020 11:10:00
 Path Name : C:\Users\jfigergrate\Documents\Jumies Files\WORK DIRS\WFC09000 NPBCID\UNIT 31\Facilities Map 31.un31rm03.dwg