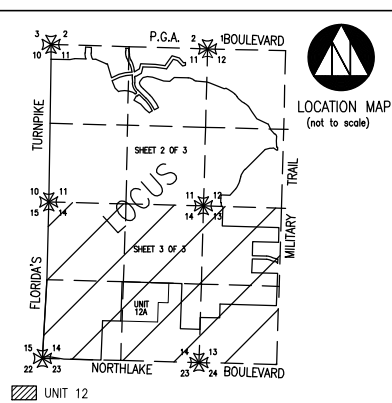


NPBCID EASEMENTS (CONTINUED) Table with columns: No., TYPE, RECORDING DATA, INST. DATE, RECORDING DATE, REMARKS. Includes entries for WMAE, WME, WMAE, WME, etc.

NPBCID EASEMENTS (CONTINUED) Table with columns: No., TYPE, RECORDING DATA, INST. DATE, RECORDING DATE, REMARKS. Includes entries for WMAE, WME, WMAE, WME, etc.

NPBCID OWNED TRACTS Table with columns: No., RECORDING DATA, INST. DATE, RECORDING DATE, REMARKS. Includes entries for WMAE, WME, WMAE, WME, etc.

NPBCID FACILITIES Table with columns: No., RECORDING DATA, INST. DATE, RECORDING DATE, REMARKS. Includes entries for WMAE, WME, WMAE, WME, etc.



TRACT RECORDING DATA REMARKS DATE Table with columns: TRACT, RECORDING DATA, REMARKS, DATE. Includes entry for LOTS 1-23.

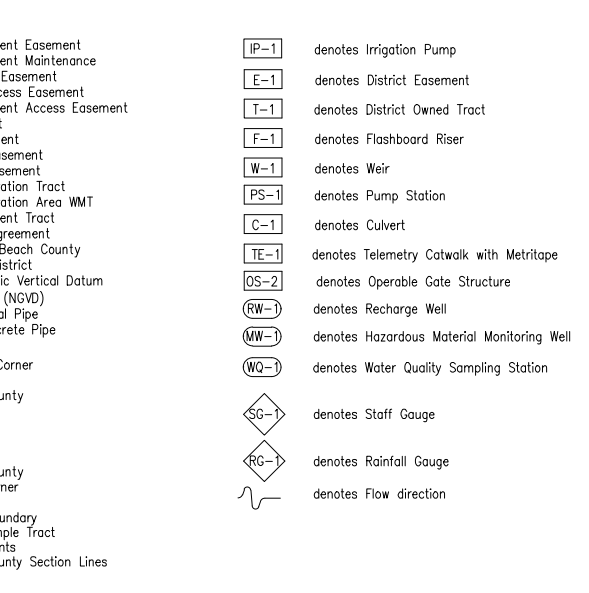


Table with columns: No., DATE, BY, REVISION. Lists revision history for the project.

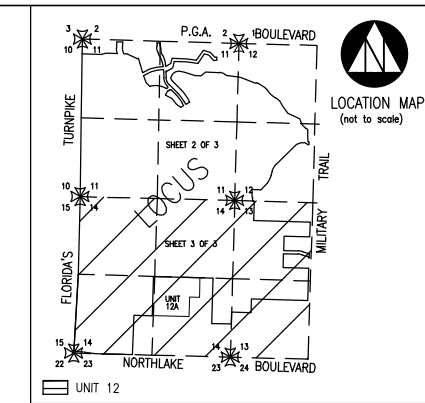
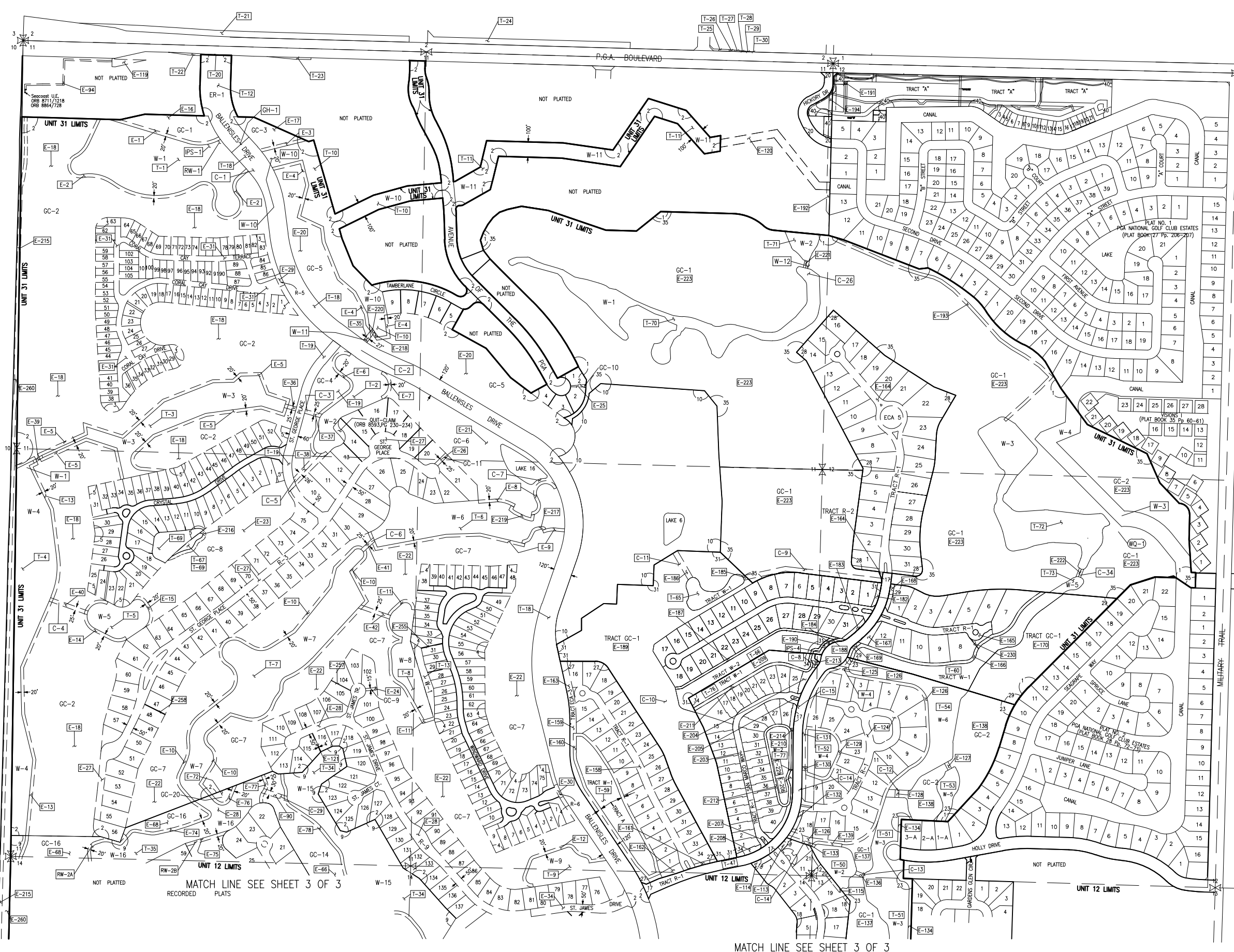
INFORMATION SHOWN HEREON DOES NOT CONSTITUTE, NOR DOES IT REPRESENT, A SURVEY OF THE SUBJECT PREMISES.

Partial Release ORB 8624/769-772 Plat No. 2, 4, 5, 6, 7, 9, 10, & 11
Partial Release ORB 9539/577-579 Plat Nos. 14, 16, 18, 19, 22, 23 & 24
Partial Release ORB 90/150-153 Plat No. 37
Partial Release ORB 92/59-61 Plat No. 38

Amended & Restated ORB 8606/774-800 Assignment of Landscape Buffer Easement and Acceptance to City of Palm Beach Gardens ORB 9897/1436-1438
Full Release of Canal and Drainage Easement by ORB 13237/645-646

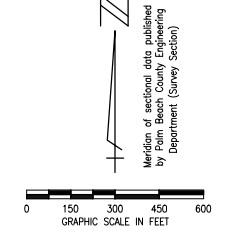
FIELD: -
DRAWN: SFRN STAFF
DESIGNED: -
APPROVED: C.A.R.
SCALE: AS SHOWN

NORTHERN PALM BEACH COUNTY IMPROVEMENT DISTRICT FACILITIES MAP
UNIT OF DEVELOPMENT NO. 31
IN SECTIONS 11, 12, 13 & 14, T. 42 S., R. 42 E.
DATE: 06-15-06
EXHIBIT 31 (1)



No.	Plat Book/Pages	Title
1	PB 27/182-183	BOUNDARY OF GOLF CLUB SITE OF THE PROFESSIONAL GOLFERS ASSOCIATION OF AMERICA, (REMAINDER AFTER REPLAT)
2	PB 64/67-81	PLAT ONE HANSEN - JDM
3	PB 64/119-121	PLAT OF CORAL CAY
4	PB 65/129-131	WINDWARD COVE
5	PB 66/18-20	CRYSTAL BAY
9	PB 73/27-43	PLAT THREE, BALLENSLES
10	PB 72/158-159	THE PLAT OF BALLENSLES COUNTRY CLUB
17	PB 76/71-72	PHASE 6 ROADWAY AT BALLENSLES
18	PB 76/73-74	BALLENSLES PARCEL 6B
20	PB 77/122-123	HICKORY DRIVE
23	PB 77/38-42	BALLENSLES POOL 9
27	PB 83/53-54	BALLENSLES POOL 7
28	PB 83/74-76	BALLENSLES POOL 10
29	PB 83/146-148	BALLENSLES POOL 8A
31	PB 83/185-190	BALLENSLES POOL 8B
34	PB 85/100-102	BALLENSLES POOL 6A
35	PB 85/70-74	BALLENSLES EAST GOLF COURSE
40	PB 95/103-105	PGA COMMONS PLAT 2
41	PB 95/113-116	BALLENSLES SOUTHWEST AREA

- NOTES:
- SEE SHEET 1 OF 3 FOR LEGEND, NPBCID EASEMENTS, OWNED TRACTS AND FACILITIES INFORMATION.
 - QUIT CLAIM DEED ORB 8593, PG 230-234.
 - BLANKET EASEMENT (ORB 6229/1258-1278) PARTIAL RELEASE RECORDED IN ORB 8824/769-772 (PLAT NOS. 2, 3, 4, 5, 6, 7, 9, 10 & 11).
 - AGREEMENT WITH NPBCID FOR INCLUSION OF THE NOT INCLUDED PARCEL RECORDED IN ORB 11053/1853-1859, 11053/1860-1866, 11053/1867-1873 DATED APRIL 14, 1999.



33	11-20-13	JAF	REVISE BORDER
32	10-10-04	SM	ADDED BALLENSLES SOUTH WEST AREA
31	02-20-06	MCS	NPBCID FACILITIES UPDATE
30	02-17-05	JCD	NPBCID FACILITIES UPDATE
29	01-05-03	STAFF	ADDED T-74, T-75, T-76, AND T-77
28	02	STAFF	ADDED EASEMENT E-255 (S' UE)
27	MAR 02	MSS	5 YEAR NPBCID FACILITIES UPDATE: C-19, C-21, C-27, C-29 THRU C-36, W-2, W-7
26	02-19-02	MSS	ADD PLAT 37 THRU PLAT 39, E-225 THRU E-254, REL. E-238, REL. ENME 4229/1258-1278, FULL REL. ORB 13237/645-616
23	06-02-00	JTC	ADD PLAT 35, T-70 THRU T-73, E-221 THRU E-223
22	05-01-00	JTC	ADD E-215 THRU E-220, T-67 THRU T-69
21	02-25-00	TDL	PHOTOL. RELEASE ORB 11547/32-34, ORB 11547/35-37, ORB 11547/38-40, ORB 11547/81-91, ADD C-27 THRU C-34, MODIFY C-10, W-2 AND W-3
20	08-20-99	TDL	ADD PLATS 25 THRU 32, E-148 THRU E-197, T-56 THRU T-58 AND NOTE 4.
19	01-22-97	AJP	5 YEAR NPBCID FACILITIES UPDATE, ADD IPS-1-4, RW-1,2A,2B, C-7-26, W-4-12, GH-1-3
17	11-11-96	KMB	ADD PLATS 20-24X-120 THRU 147, ADD PLAT 35
16	02-14-96	KMB	ADD E-119
15	01-02-96	KMB	ADD PLATS 15-19X-101-118, 43-48
14	12-28-95	MHC	ADD ORB 8809/107,884/728
13	11-07-95	KMB	ADD RECENT PLATS
11	8-01-95	MHC	Rev. Plat No. 3 Ref. Add Amend ORB 8608/774, Note 4 Blanket Easement ORB 8824/769
10	6-23-95	KMB	ADD PLAT 11, 12, 13 E-93, 94, T-39, 40, 41
9	4-20-95	AJP	ADD SEACREST DE ORB 8711/1218
8	12-21-94	AJP	ADD RELEASE ORB 6782/748
7	12-21-94	AJP	ADD PLAT NO. 9 / E-60 - 92, T-34 - 38
5	4-14-94	MHC	SUR. AFT. ORB 8439/1430
3	10-7-92	MHC	ADD T-18 THRU T-30, E-58
2	3-20-92	MHC	T-12 AT PGA BLVD.
1	7-26-91	MHC	UNIT BOUNDARY
			T-8 EASE, ORB 6884/356-359

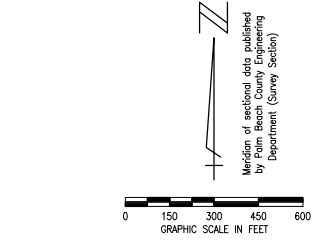
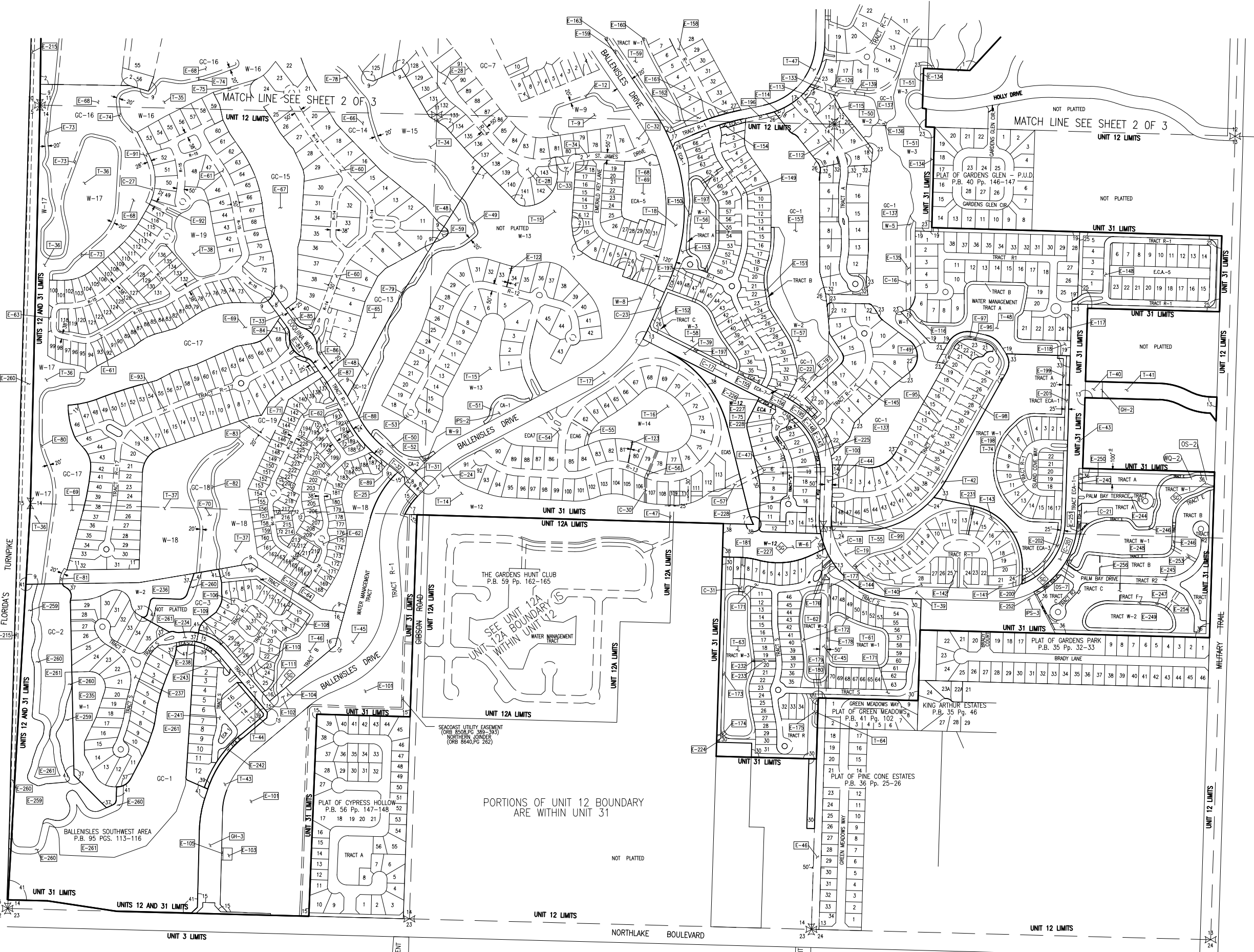
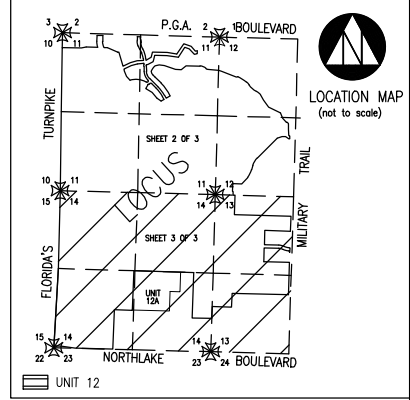
SHEET 2 OF 3
DATE: 06-15-06
NORTHERN PALM BEACH COUNTY IMPROVEMENT DISTRICT
UNIT OF DEVELOPMENT NO. 31
IN SECTIONS 11, 12, 13 & 14, T. 42 S., R. 42 E.
PALM BEACH COUNTY, FLORIDA
EXHIBIT 31 (2)

FIELD: --
DRAWN: SFRN STAFF
DESIGNED: --
APPROVED: C.A.R.
SCALE: AS SHOWN



Date/Time : Thu, 14 Nov 2013 - 11:18:00
Path Name : C:\Projects\LMR\WF\059000\CAD\Unit-31\Facilities_Map_Unit31.mxd.dwg

INFORMATION SHOWN HEREON DOES NOT CONSTITUTE, NOR DOES IT REPRESENT, A SURVEY OF THE SUBJECT PREMISES.



No.	Plot Book/Pages	Title
2	PB 64/67-81	PLAT ONE HANSEN - JDM
6	PB 66/136-137	EMERALD KEY
7	PB 69/195-200	PLAT TWO HANSEN - JDM
8	PB 72/138-139	COOLINA WAY AT BALLENSLIES
9	PB 73/27-43	PLAT THREE, BALLENSLIES
11	PB 74/53-56	BALLENSLIES - 14 REPLAT
12	PB 74/132-134	SUNSET BAY, PLAT ONE
13	PB 74/194-195	PHASE 4 ROADWAY AT BALLENSLIES
14	PB 75/65-67	PLAT OF BANYAN ISLE AT BALLENSLIES
15	PB 76/43-44	PHASE 5 ROADWAY AT BALLENSLIES
16	PB 76/68-70	BALLENSLIES POD 16B
17	PB 76/71-72	PHASE 6 ROADWAY AT BALLENSLIES
18	PB 76/73-74	BALLENSLIES PARCEL 6B
19	PB 76/75-76	SABAL POINTE AT BALLENSLIES
21	PB 77/74-75	REPLAT OF LOTS 22 AND 23 PLAT OF BANYAN ISLE AT BALLENSLIES
22	PB 77/36-37	BALLENSLIES POD 19B
23	PB 77/38-42	BALLENSLIES POD 9
24	PB 78/3-4	VICTORIA BAY AT BALLENSLIES (POD 22)
25	PB 81/37-38	PLAT OF BALLENSLIES POD 25B
26	PB 81/103-108	BALLENSLIES POD 19A
27	PB 83/53-54	BALLENSLIES POD 20A
30	PB 83/167-170	BALLENSLIES PODS 20A AND 20B
32	PB 84/46-47	BALLENSLIES - PARCEL 6B REPLAT
33	PB 85/97-99	BALLENSLIES - POD 24
36	PB 89/159-161	BALLENSLIES - POD 23
37	PB 90/150-153	BALLENSLIES - POD 15
38	PB 92/59-61	BALLENSLIES - POD 21
39	PB 92/136-137	BALLENSLIES POD 16A
41	PB 95/113-116	BALLENSLIES SOUTHWEST AREA

- NOTES:
- SEE SHEET 1 OF 3 FOR LEGEND, NPBCID EASEMENTS, OWNED TRACTS AND FACILITIES INFORMATION.
 - QUIT CLAIM DEED ORB 8593, PG 230-234.
 - BLANKET EASEMENT (ORB 6229/1258-1278) PARTIAL RELEASE RECORDED IN ORB 8824/769-772 (PLATS NOS. 2, 3, 4, 5, 6, 7, 9, 10 & 11).
 - AGREEMENT WITH NPBCID FOR INCLUSION OF THE NOT INCLUDED PARCEL RECORDED IN ORB 11053/1853-1859, 11053/1860-1866, 11053/1867-1873 DATED APRIL 14, 1999.

33	11-20-13	JMC	REVISED BORDER
32	10-10-06	SW	ADD BALLENSLIES SOUTH WEST AREA
31	02-20-06	MCB	NPBCID FACILITIES UPDATE
30	02-17-05	JCB	NPBCID FACILITIES UPDATE
29	01-06-04	CAR	ADD T-74, T-75, T-76, AND T-77
27	MAR 02	MBS	5 YEAR NPBCID FACILITIES UPDATE: C-19, C-21, C-27, C-29 THRU C-36, W-2, W-7
26	2-19-02	MBS	ADD PLAT 37 THRU PLAT 39, E-225 THRU E-254, REL E-239, REL BMBE 6229/1258-1278, FULL REL ORB 13237/645-616
25	9-08-01	CAB	ADD PLAT 36
24	10-11-00	JTC	ADD E-224
22	5-01-00	JTC	ADD E-215 THRU E-220, T-67 THRU T-69
			PARTIAL RELEASE ORB 11547/32-34,
			ORB 11547/35-37, ORB 11547/38-40,
			ORB 11547/81-91, ADD C-27 THRU C-34,
			MOODY C-10, W-2 AND W-3
21	2-25-00	TDL	PLAT 33, E-198 THRU E-202,
			PLAT 34, E-203 THRU E-214
20	8-20-99	TDL	ADD PLATS 25 THRU 32, E-148 THRU
			E-197, T-56 THRU T-66 AND NOTE 4,
19	1-22-97	AJP	5 YEAR NPBCID FACILITIES UPDATE, ADD
			IPS-1-4, RW-1,2A,2B, C-7-26, W-4-12,
			GH-1-3
17	11-11-96	KMB	ADD PLATS 20-24-E-120 THRU 147,
			T-49 THRU 55
15	11-03-96	KMB	ADD PLATS 15-19-E-101-118, T-43-48
12	3-25-95	KMB	ADD PLAT 14-E-100, T-42
10	6-23-95	KMB	ADD PLAT 11,12,13, E-93,94, T-39,40,41
			ADD SEACAST UE ORB 8711/1221
			ADD RELEASE ORB 8782/748-752
			ADD SEACAST UE ORB 8640/282
9	4-20-95	AJP	ADD RELEASE ORB 8579/277-281
			ADD QUIT CLAIM DEED ORB 8593/230-234
7	12-1-94	AJP	ADD PLAT NO. 9 T-60 - 92, T-34 - 38
			SUB. INT. ORB 8439/1430
6	8-16-94	MHC	ADD E-59, T-31 - T-33 AND PLAT 8
5	4-14-94	MHC	ADD T-18 THRU T-30, E-58
4	6-23-93	MHC	ADD PLAT 7, E-48, -57, T-14 - 17
3	12-15-92	MHC	PARTIAL RELEASE E-47 ORB 7484/368-375
2	3-20-92	MHC	UNIT BOUNDARY
1	7-26-91	MHC	T-8 EASE, ORB 6884/356-359

No.	DATE	BY	REVISION

INFORMATION SHOWN HEREON DOES NOT CONSTITUTE, NOR DOES IT REPRESENT, A SURVEY OF THE SUBJECT PREMISES.

FIELD: -
 DRAWN: SFRN STAFF
 DESIGNED: -
 APPROVED: C.A.R.
 SCALE: AS SHOWN



NORTHERN PALM BEACH COUNTY
 IMPROVEMENT DISTRICT
 FACILITIES MAP
 UNIT OF DEVELOPMENT NO. 31
 IN SECTIONS 11, 12, 13 & 14, T. 42 S., R. 42 E.
 PALM BEACH COUNTY, FLORIDA

SHEET 3 OF 3
 DATE: 06-15-06
 EXHIBIT 31 (3)

Date/Time : Thu, 14 Nov 2013 11:28am
 Path Name : G:\Projects\LMR\WF\WF050000_CAD\Unit-31\Facilities Map\Unit31.mxd.dwg