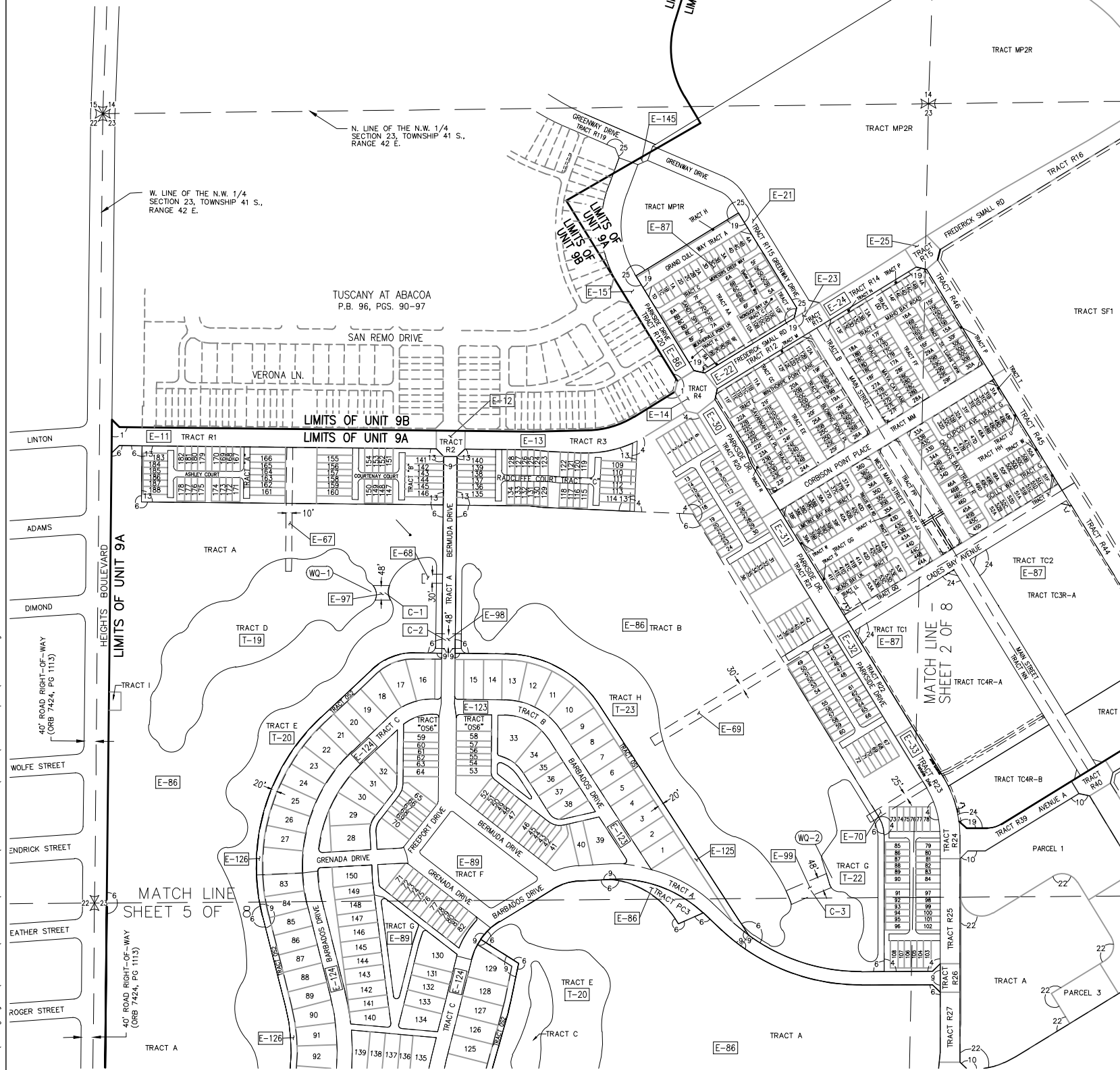


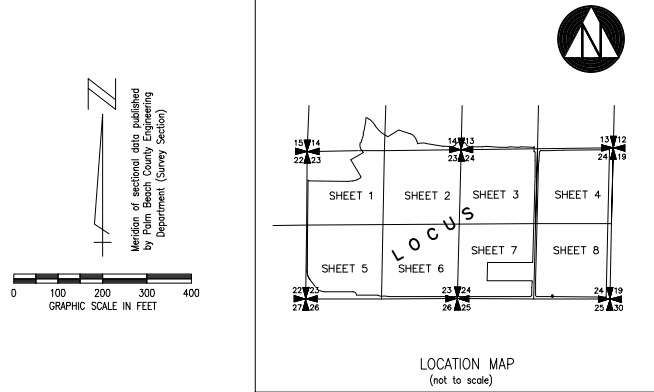
NOTES:

- PORTIONS OF THE CANAL EASEMENTS LYING WITHIN THIS UNIT OF DEVELOPMENT AS RECORDED ON APRIL 3, 1979 IN OFFICIAL RECORD BOOK 3035, PAGES 737-738 (AS SHOWN ON FACILITIES MAP UNIT OF DEVELOPMENT UNIT NO. 9) WERE RELEASED ON AUGUST 30, 1996 BY OFFICIAL RECORD BOOK 9680, PAGES 1223-1225 AND RECORDED ON DECEMBER 20, 1996. FULL RELEASE OF EASEMENT BY OFFICIAL RECORD BOOK 12463, PAGES 1400-1401, AND RECORDED ON APRIL 17, 2001.
- NOTICE AND DISCLOSURE BY NPBCID FOR UNITS OF DEVELOPMENT NUMBER 9A AND 9B EXECUTED APRIL 6, 1995 AND RECORDED ON APRIL 10, 1995 IN OFFICIAL RECORD BOOK 8694, PAGES 1286-1288. AMENDED NOTICE AND DISCLOSURE FOR UNIT 9B EXECUTED ON APRIL 15, 1996 AND RECORDED ON APRIL 22, 1996 IN OFFICIAL RECORD BOOK 9224, PAGES 222-239. AMENDED NOTICE AND DISCLOSURE FOR UNIT 9A EXECUTED ON APRIL 15, 1996 AND RECORDED ON APRIL 22, 1996 IN OFFICIAL RECORD BOOK 9224 PAGES 268-285.
- AGREEMENT BETWEEN NPBCID AND ABACOA DEVELOPMENT COMPANY FOR ENSURING THE UNIFORMITY IN THE APPLICATIONS OF CODES FOR LAND USE CLASSIFICATIONS FOR UNITS 9A AND 9B EXECUTED ON JULY 17, 1996 AND RECORDED ON SEPTEMBER 29, 1996 IN OFFICIAL RECORD BOOK 9457, PAGES 1073-1093.
- AGREEMENT BETWEEN NPBCID AND PALM BEACH COUNTY FOR INCLUSION OF REAL PROPERTY WITHIN UNITS OF DEVELOPMENT NO. 9A AND 9B EXECUTED ON SEPTEMBER 16, 1997 AND RECORDED ON OCTOBER 1, 1997 IN OFFICIAL RECORD BOOK 10012, PAGES 627-634.
- AGREEMENT BETWEEN NPBCID AND THE JOHN D. AND CATHERINE T. MCCARTHUR FOUNDATION FOR INCLUSION OF REAL PROPERTY WITHIN UNITS OF DEVELOPMENT NO. 9A AND 9B EXECUTED ON OCTOBER 22, 1997 AND RECORDED ON OCTOBER 27, 1997 IN OFFICIAL RECORD BOOK 10053, PAGES 1266-1273.
- INTERLOCAL AGREEMENT FOR ABACOA DEVELOPER IMPROVEMENTS BETWEEN THE LOKAHATCHEE RIVER ENVIRONMENTAL CONTROL DISTRICT AND NPBCID TO COOPERATE AND ASSIST EACH OTHER IN PROVIDING THE WASTEWATER SERVICES TO THE ABACOA MIXED-USE DEVELOPMENT EXECUTED DECEMBER 3, 1997 AND RECORDED ON JANUARY 27, 1998 IN OFFICIAL RECORD BOOK 10197, PAGES 1747-1762.
- MAINTENANCE AGREEMENT BETWEEN NPBCID AND ABACOA PROPERTY OWNERS ASSEMBLY, INC. EXECUTED APRIL 8, 1998 AND RECORDED ON APRIL 10, 1998 IN OFFICIAL RECORD BOOK 10336, PAGES 89-90.
- NORTHERN PALM BEACH COUNTY IMPROVEMENT DISTRICT ASSIGNMENT OF DRAINAGE EASEMENTS TO AND ACCEPTANCE BY THE TOWN OF JUPITER EXECUTED OCTOBER 20, 1998 AND RECORDED ON MAY 14, 1999 IN OFFICIAL RECORD BOOK 11110, PAGES 705-714.
- FIRST AMENDMENT TO THE SEPTEMBER 16TH, 1996 AGREEMENT BETWEEN NORTHERN PALM BEACH COUNTY IMPROVEMENT DISTRICT AND ABACOA DEVELOPMENT COMPANY, EXECUTED ON MARCH 7, 2003 AND RECORDED ON MARCH 11, 2003 IN OFFICIAL RECORD BOOK 14909, PAGES 1321-1324.

- AGREEMENT BETWEEN NPBCID AND ABACOA DEVELOPMENT COMPANY FOR ENSURING THE UNIFORMITY IN THE APPLICATIONS OF CODES FOR LAND USE CLASSIFICATIONS FOR UNITS 9A AND 9B EXECUTED ON JULY 17, 1996 AND RECORDED ON SEPTEMBER 29, 1996 IN OFFICIAL RECORD BOOK 9457, PAGES 1073-1093.
- AGREEMENT BETWEEN NPBCID AND PALM BEACH COUNTY FOR INCLUSION OF REAL PROPERTY WITHIN UNITS OF DEVELOPMENT NO. 9A AND 9B EXECUTED ON SEPTEMBER 16, 1997 AND RECORDED ON OCTOBER 1, 1997 IN OFFICIAL RECORD BOOK 10012, PAGES 627-634.
- AGREEMENT BETWEEN NPBCID AND THE JOHN D. AND CATHERINE T. MCCARTHUR FOUNDATION FOR INCLUSION OF REAL PROPERTY WITHIN UNITS OF DEVELOPMENT NO. 9A AND 9B EXECUTED ON OCTOBER 22, 1997 AND RECORDED ON OCTOBER 27, 1997 IN OFFICIAL RECORD BOOK 10053, PAGES 1266-1273.
- INTERLOCAL AGREEMENT FOR ABACOA DEVELOPER IMPROVEMENTS BETWEEN THE LOKAHATCHEE RIVER ENVIRONMENTAL CONTROL DISTRICT AND NPBCID TO COOPERATE AND ASSIST EACH OTHER IN PROVIDING THE WASTEWATER SERVICES TO THE ABACOA MIXED-USE DEVELOPMENT EXECUTED DECEMBER 3, 1997 AND RECORDED ON JANUARY 27, 1998 IN OFFICIAL RECORD BOOK 10197, PAGES 1747-1762.
- MAINTENANCE AGREEMENT BETWEEN NPBCID AND ABACOA PROPERTY OWNERS ASSEMBLY, INC. EXECUTED APRIL 8, 1998 AND RECORDED ON APRIL 10, 1998 IN OFFICIAL RECORD BOOK 10336, PAGES 89-90.
- NORTHERN PALM BEACH COUNTY IMPROVEMENT DISTRICT ASSIGNMENT OF DRAINAGE EASEMENTS TO AND ACCEPTANCE BY THE TOWN OF JUPITER EXECUTED OCTOBER 20, 1998 AND RECORDED ON MAY 14, 1999 IN OFFICIAL RECORD BOOK 11110, PAGES 705-714.
- FIRST AMENDMENT TO THE SEPTEMBER 16TH, 1996 AGREEMENT BETWEEN NORTHERN PALM BEACH COUNTY IMPROVEMENT DISTRICT AND ABACOA DEVELOPMENT COMPANY, EXECUTED ON MARCH 7, 2003 AND RECORDED ON MARCH 11, 2003 IN OFFICIAL RECORD BOOK 14909, PAGES 1321-1324.



No.	REMARKS
C-1	48 LF 36" RCP WITH 40 LF 36" CMP, E 6.0
C-2	96 LF 48" RCP WITH 40 LF 48" CMP, E 5.0
C-3	162 LF 48" RCP WITH 40 LF 48" CMP, E 5.0
WQ-1	WATER QUALITY SAMPLING STATION
WQ-2	WATER QUALITY SAMPLING STATION



No.	PLAT BOOK/PAGES	TITLE
1	PB 78/145-163	ABACOA PLAT NO. 1
4	PB 84/151-34	CHARLESTON COURT AT ABACOA
6	PB 84/155-161	ABACOA-A REPLAT OF TRACTS GF1 AND GF2
9	PB 85/113-121	THE ISLAND AT ABACOA
10	PB 86/83-85	ABACOA TOWN CENTER PLAT NO. 2
13	PB 89/4-7	CHARLESTON COURT AT ABACOA PHASE II
19	PB 97/157-165	ABACOA TOWN CENTER PLAT NO. 3
22	PB 102/155-156	ABACOA TOWN CENTER PLAT NO. 2 TRACT "A"
24	PB 116/148-148	ABACOA TOWN CENTER PLAT NO. 4
25	PB 88/154-159	ABACOA - PLAT NO. 3

No.	RECORDING DATA	INST. DATE	RECORDING DATA	INST. DATE	REMARKS
T-2	ORB 10441/1196-1197	6-02-99	6-04-98		TRACT GW1
T-3	ORB 10441/1196-1197	6-02-99	6-04-98		TRACT GW2
T-19	PB 84/155-161	3-31-99	TRACT D (LINED LAKE)		
T-20	PB 84/155-161	3-31-99	TRACT E (LINED LAKE)		
T-22	PB 84/155-161	3-31-99	TRACT G (LINED LAKE)		
T-23	PB 84/155-161	3-31-99	TRACT H (LINED LAKE)		

- LEGEND:**
- WME denotes Water Management Easement
  - WMM denotes Water Management Maintenance
  - EE denotes Egress-Easement
  - COAE denotes Golf Course Access Easement
  - WMAE denotes Water Management Access Easement
  - E denotes Utility Easement
  - DE denotes Drainage Easement
  - CE denotes Conservation Easement
  - PE denotes Preservation Easement
  - PT denotes Wetland Preservation Area
  - WPA denotes Wetland Preservation Area WMT
  - MT denotes Water Management Tract
  - LOA denotes Land Owners Agreement
  - NPBCID denotes Northern Palm Beach County Improvement District
  - NGVD denotes National Geodetic Vertical Datum
  - IE denotes Invert Elevation (NGVD)
  - CMP denotes Corrugated Metal Pipe
  - RCP denotes Reinforced Concrete Pipe
  - denotes Recorded Plat Corner
  - denotes Palm Beach County Section Corner
  - denotes Palm Beach County Section Quarter Corner
  - denotes NPBCID Unit Boundary
  - denotes NPBCID Fee Simple Tract
  - denotes NPBCID Easements
  - denotes Palm Beach County Section Lines
  - IP-1 denotes Irrigation Pump
  - E-1 denotes District Easement
  - T-1 denotes District Owned Tract
  - F-1 denotes Flashboard Riser
  - W-1 denotes Weir
  - PS-1 denotes Pump Station
  - C-1 denotes Culvert
  - TE-1 denotes Telemetry Catwalk with Metritape
  - OS-2 denotes Operable Gate Structure
  - RW-1 denotes Recharge Well
  - HM-1 denotes Hazardous Material Monitoring Well
  - WQ-1 denotes Water Quality Sampling Station
  - SG-1 denotes Staff Gauge
  - RG-1 denotes Rainfall Gauge
  - denotes Flow direction

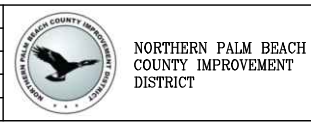
No.	TYPE	RECORDING DATA	INST. DATE	RECORDING DATA	INST. DATE	REMARKS
E-11	EE	PB 78/145-163		12-20-96		TRACT R1
E-12	EE	PB 78/145-163		12-20-96		TRACT R2
E-13	EE	PB 78/145-163		12-20-96		TRACT R3
E-14	EE	PB 78/145-163		12-20-96		TRACT R4
E-15	EE	PB 78/145-163		12-20-96		TRACT R5 (TRACT R120 - PB 88/154-159)
E-16	EE	PB 78/145-163		12-20-96		TRACT R6 (TRACT R120 - PB 88/154-159)
E-17	EE	PB 78/145-163		12-20-96		TRACT R7
E-18	EE	PB 78/145-163		12-20-96		TRACT R8
E-19	EE	PB 78/145-163		12-20-96		TRACT R9
E-20	EE	PB 78/145-163		12-20-96		TRACT R10 (TRACT R115 - PB 88/154-159)
E-21	EE	PB 78/145-163		12-20-96		TRACT R11 (TRACT R115 - PB 88/154-159)
E-22	EE	PB 78/145-163		12-20-96		TRACT R12
E-23	EE	PB 78/145-163		12-20-96		TRACT R13
E-24	EE	PB 78/145-163		12-20-96		TRACT R14
E-25	EE	PB 78/145-163		12-20-96		TRACT R15
E-30	EE	PB 78/145-163		12-20-96		TRACT R20
E-31	EE	PB 78/145-163		12-20-96		TRACT R21
E-32	EE	PB 78/145-163		12-20-96		TRACT R22
E-33	EE	PB 78/145-163		12-20-96		TRACT R23
E-67	DE	PB 78/145-163		12-20-96		SEE NOTE 9
E-68	DE	PB 78/145-163		12-20-96		SEE NOTE 9
E-69	DE	PB 78/145-163		12-20-96		SEE NOTE 9
E-70	DE	PB 78/145-163		12-20-96		SEE NOTE 9
E-86	ORB	9580/1281-1291	12-12-96	12-20-96		BLANKET EASEMENT AGREEMENT
E-87	ORB	9580/1292-1308	12-12-96	12-20-96		TEMPORARY CONSTRUCTION EASEMENT AGREEMENT
E-88	ORB	9580/1318-1324	12-12-96	12-20-96		TEMPORARY CONSTRUCTION EASEMENT AGREEMENT
E-97	WME	ORB 10523/1412-1424	7-02-98	7-16-98		
E-98	WME	ORB 10523/1412-1424	7-02-98	7-16-98		
E-99	WME	ORB 10523/1412-1424	7-02-98	7-16-98		
E-123	EE	PB 85/113-121		7-30-99		TRACT B
E-124	EE	PB 85/113-121		7-30-99		TRACT C
E-129	WMAE	PB 85/113-121		7-30-99		TRACT OS1
E-126	WMAE	PB 85/113-121		7-30-99		TRACT OS2
E-145	EE	PB 88/154-159		10-13-00		TRACT R119

TRACT	RECORDING DATA	REMARKS	DATE
R5-R10	RELEASE 9580/1281-1291	E-8, E-16, E-19, E-20 (TRACTS R5-R10 REPLATED AS TRACTS R115 & R120 PER ABACOA - PLAT NO. 3)	12-20-96
SF1	RELEASE 9583/1550-1553	E-86	12-23-96
MP1, MP2	RELEASE 9982/1319-1320	E-86	09-17-97
R1-R4, R11-R17, R19-R38, R40-R50	RELEASE 10226/1093-1095	E-86	11-19-97
R10C	RELEASE 10594/1632-1633	E-89	08-19-98
PLAT (10)	RELEASE 11394/1219-1221	ABACOA TOWN CENTER PLAT NO. 2	10-12-98
RDI, RDI B	RELEASE 11431/1077-1079	E-89	11-01-99
I, J	RELEASE 11818/156-158	ABACOA A REPLAT OF TRACTS GF1 AND GF2	06-06-00
R-39	RELEASE 12050/574-578	E-86, E-87	10-02-00
	RELEASE 12336/1059-1060	E-86	01-04-01
	RELEASE 12463/1398-1399	E-87	04-17-01
	RELEASE 12463/1402-1418	E-87	04-17-01

Current Plotstyle: Bc\color  
 Path Name: C:\Users\Fitzgerald\Documents\James Files\WORK DWG\NPBCID UNIT 9A\Facilities Map 9A\UD9A\FM01.dwg

INFORMATION SHOWN HEREON DOES NOT CONSTITUTE, NOR DOES IT REPRESENT, A SURVEY OF THE SUBJECT PREMISES.

FIELD: -
DRAWN: SFRN STAFF
DESIGNED: -
APPROVED: C.A.R.
SCALE: AS SHOWN

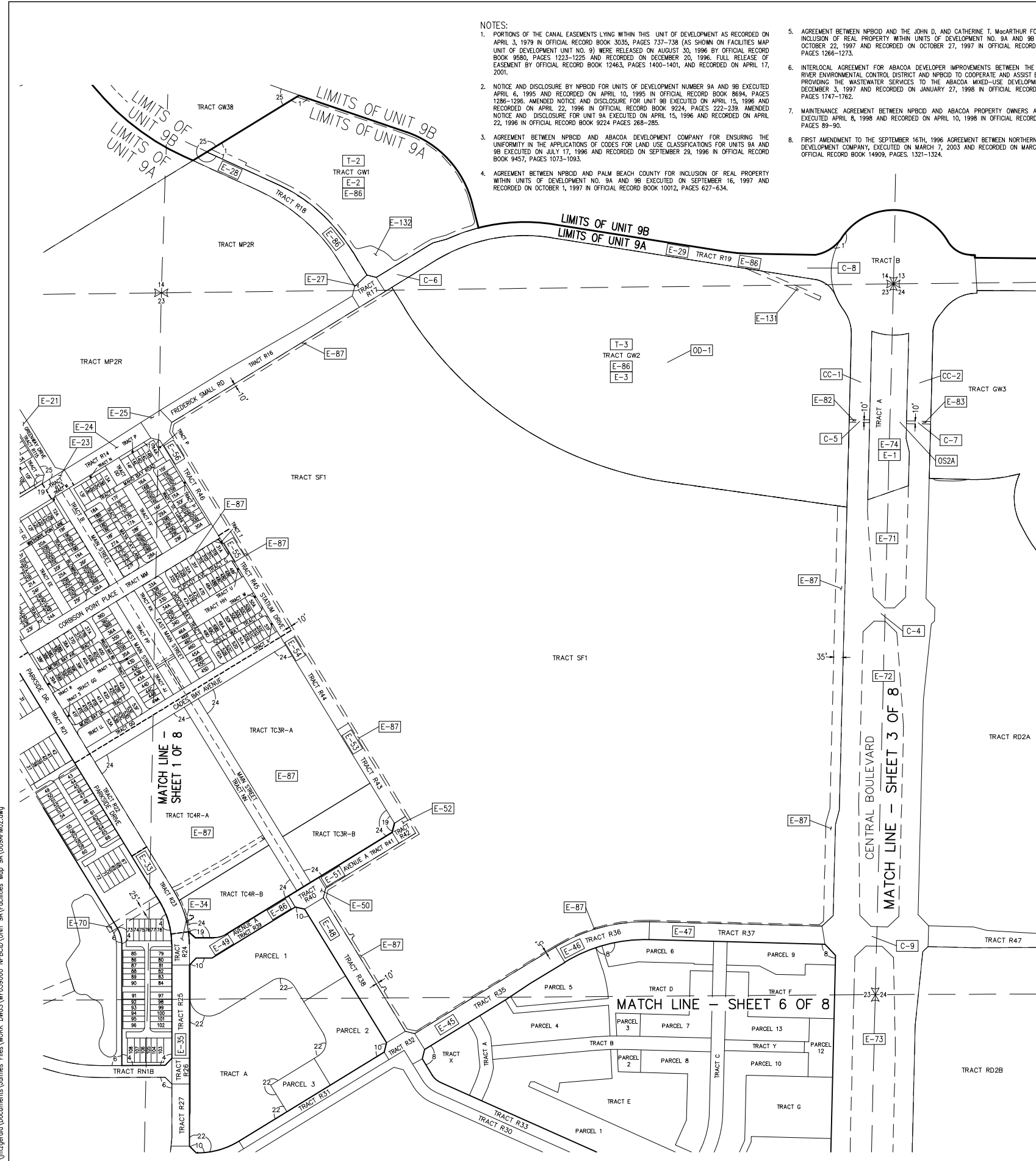


NORTHERN PALM BEACH COUNTY IMPROVEMENT DISTRICT  
 FACILITIES MAP  
 UNIT OF DEVELOPMENT NO. 9A  
 SECTIONS 13, 14, 23 & 24,  
 T. 41 S., R. 42 E.  
 PALM BEACH COUNTY, FLORIDA

DATE: 06-15-06  
 SHEET 1 OF 8  
 EXHIBIT 9A (1)

Current Date: Tue, 12 Jun 2021 10:00am  
 Path Name: C:\Users\jfitzgerald\Documents\James Files\WORK\DWG\5000 NPBCID UNIT 9A\Facilities Map 9A\U09A02.dwg

INFORMATION SHOWN HEREON DOES NOT CONSTITUTE, NOR DOES IT REPRESENT, A SURVEY OF THE SUBJECT PREMISES.



- NOTES:**
- PORTIONS OF THE CANAL EASEMENTS LYING WITHIN THIS UNIT OF DEVELOPMENT AS RECORDED ON APRIL 3, 1979 IN OFFICIAL RECORD BOOK 3035, PAGES 737-738 (AS SHOWN ON FACILITIES MAP UNIT OF DEVELOPMENT UNIT NO. 9) WERE RELEASED ON AUGUST 30, 1996 BY OFFICIAL RECORD BOOK 9580, PAGES 1223-1225 AND RECORDED ON DECEMBER 20, 1996. FULL RELEASE OF EASEMENT BY OFFICIAL RECORD BOOK 12463, PAGES 1400-1401, AND RECORDED ON APRIL 17, 2001.
  - NOTICE AND DISCLOSURE BY NPBCID FOR UNITS OF DEVELOPMENT NUMBER 9A AND 9B EXECUTED APRIL 6, 1995 AND RECORDED ON APRIL 10, 1995 IN OFFICIAL RECORD BOOK 8694, PAGES 1286-1296. AMENDED NOTICE AND DISCLOSURE FOR UNIT 9B EXECUTED ON APRIL 15, 1996 AND RECORDED ON APRIL 22, 1996 IN OFFICIAL RECORD BOOK 9224, PAGES 222-239. AMENDED NOTICE AND DISCLOSURE FOR UNIT 9A EXECUTED ON APRIL 15, 1996 AND RECORDED ON APRIL 22, 1996 IN OFFICIAL RECORD BOOK 9224 PAGES 268-285.
  - AGREEMENT BETWEEN NPBCID AND ABACOA DEVELOPMENT COMPANY FOR ENSURING THE UNIFORMITY IN THE APPLICATIONS OF CODES FOR LAND USE CLASSIFICATIONS FOR UNITS 9A AND 9B EXECUTED ON JULY 17, 1996 AND RECORDED ON SEPTEMBER 29, 1996 IN OFFICIAL RECORD BOOK 9457, PAGES 1073-1093.
  - AGREEMENT BETWEEN NPBCID AND PALM BEACH COUNTY FOR INCLUSION OF REAL PROPERTY WITHIN UNITS OF DEVELOPMENT NO. 9A AND 9B EXECUTED ON SEPTEMBER 16, 1997 AND RECORDED ON OCTOBER 1, 1997 IN OFFICIAL RECORD BOOK 10012, PAGES 627-634.
  - AGREEMENT BETWEEN NPBCID AND THE JOHN D. AND CATHERINE T. MACARTHUR FOUNDATION FOR INCLUSION OF REAL PROPERTY WITHIN UNITS OF DEVELOPMENT NO. 9A AND 9B EXECUTED ON OCTOBER 22, 1997 AND RECORDED ON OCTOBER 27, 1997 IN OFFICIAL RECORD BOOK 10053, PAGES 1266-1273.
  - INTERLOCAL AGREEMENT FOR ABACOA DEVELOPER IMPROVEMENTS BETWEEN THE LOXAHATCHEE RIVER ENVIRONMENTAL CONTROL DISTRICT AND NPBCID TO COOPERATE AND ASSIST EACH OTHER IN PROVIDING THE WASTEWATER SERVICES TO THE ABACOA MIXED-USE DEVELOPMENT EXECUTED DECEMBER 3, 1997 AND RECORDED ON JANUARY 27, 1998 IN OFFICIAL RECORD BOOK 10197, PAGES 1747-1762.
  - MAINTENANCE AGREEMENT BETWEEN NPBCID AND ABACOA PROPERTY OWNERS ASSEMBLY, INC. EXECUTED APRIL 8, 1998 AND RECORDED ON APRIL 10, 1998 IN OFFICIAL RECORD BOOK 10336, PAGES 89-90.
  - FIRST AMENDMENT TO THE SEPTEMBER 16TH, 1996 AGREEMENT BETWEEN NORTHERN AND ABACOA DEVELOPMENT COMPANY, EXECUTED ON MARCH 7, 2003 AND RECORDED ON MARCH 11, 2003 IN OFFICIAL RECORD BOOK 14909, PAGES 1321-1324.

**NPBCID FACILITIES**

No.	REMARKS
OS-2A	(2) 48"x178" ERCPs WITH 6" WIDE CONCRETE WEIR ELEV=10.0, 5.75'x1' BLEEDER ELEV=9.0
C-4	(2) 48" RCP WITH MITERED END SECTIONS IE 5.5
C-5	(2) 88' LF OF 48" X 76" ELLIPTICAL RCP WITH ENDWALLS IE 6.6
C-6	72' LF OF 48" RCP WITH ENDWALLS (ABANDONED CONTROL STRUCTURE) IE 9.0
C-7	(2) 108' LF OF 48" X 76" ELLIPTICAL RCP WITH ENDWALLS IE 4.56
C-8	(2) 200' LF OF 29" X 45" ELLIPTICAL RCP WITH MITERED END SECTIONS IE 5.0
C-9	123' LF OF 48" RCP WITH MITERED END SECTIONS IE 5.5
CC-1	88' LF 24" X 36" CRITTER CROSSING IE 9.2
CC-2	88' LF 24" X 36" CRITTER CROSSING
OD-1	OBSERVATION DECK (GREENWAY)

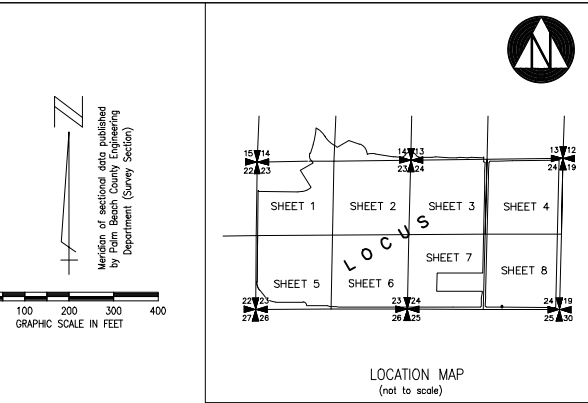
**RECORDED PLATS**

No.	PLAT BOOK/PAGES	TITLE
1	PB 78/145-163	ABACOA PLAT NO. 1
4	PB 84/31-34	CHARLESTON COURT AT ABACOA
6	PB 84/155-161	ABACOA-A REPLAT OF TRACTS GF1 AND GF2
8	PB 85/25-27	ABACOA TOWN CENTER PLAT NO. 1
10	PB 86/83-85	ABACOA TOWN CENTER PLAT NO. 2
19	PB 97/157-165	ABACOA TOWN CENTER PLAT NO. 3
22	PB 102/155-158	ABACOA TOWN CENTER PLAT NO. 2, TRACT "A"
24	PB 116/145-148	ABACOA TOWN CENTER PLAT NO. 4
25	PB 88/154-159	ABACOA - PLAT NO. 3

**NPBCID OWNED TRACTS**

No.	RECORDING DATA	INST. DATE	RECORDING DATE	REMARKS
T-2	ORB 10441/1196-1197	6-02-98	6-04-98	TRACT GW1
T-3	ORB 10441/1196-1197	6-02-98	6-04-98	TRACT GW2

- LEGEND:**
- WME denotes Water Management Easement
  - WMME denotes Water Management Maintenance
  - IEE denotes Ingress-Egress Easement
  - GCAE denotes Golf Course Access Easement
  - WMAE denotes Water Management Access Easement
  - E denotes Utility Easement
  - DE denotes Drainage Easement
  - CE denotes Conservation Easement
  - PE denotes Preservation Easement
  - PT denotes Wetland Preservation Tract
  - WPA denotes Wetland Preservation Area WMT
  - MT denotes Water Management Tract
  - LOA denotes Land Owners Agreement
  - NPBCID denotes Northern Palm Beach County Improvement District
  - NGVD denotes National Geodetic Vertical Datum
  - IE denotes Invert Elevation (NGVD)
  - CMP denotes Corrugated Metal Pipe
  - RCP denotes Reinforced Concrete Pipe
  - PC denotes Recorded Plat Corner
  - SC denotes Palm Beach County Section Corner
  - QC denotes Palm Beach County Section Quarter Corner
  - UB denotes NPBCID Unit Boundary
  - FST denotes NPBCID Fee Simple Tract
  - EE denotes NPBCID Easements
  - SL denotes Palm Beach County Section Lines
  - IP-1 denotes Irrigation Pump
  - E-1 denotes District Easement
  - T-1 denotes District Owned Tract
  - F-1 denotes Flashboard Riser
  - W-1 denotes Weir
  - PS-1 denotes Pump Station
  - C-1 denotes Culvert
  - TE-1 denotes Telemetry Catwalk with Metritape
  - OS-2 denotes Operable Gate Structure
  - RW-1 denotes Recharge Well
  - MW-1 denotes Hazardous Material Monitoring Well
  - WQ-1 denotes Water Quality Sampling Station
  - SG-1 denotes Staff Gauge
  - RG-1 denotes Rainfall Gauge
  - FD denotes Flow direction



**NPBCID EASEMENTS**

No.	TYPE	RECORDING DATA	INST. DATE	RECORDING DATE	REMARKS
E-1	CE	ORB 9567/793-831	11-20-96	12-12-96	CONSERVATION EASEMENT TRACT A
E-2	CE	ORB 9567/793-831	11-20-96	12-12-96	CONSERVATION EASEMENT TRACT GW1
E-3	CE	ORB 9567/793-831	11-20-96	12-12-96	CONSERVATION EASEMENT TRACT GW2
E-21	IEE	PB 78/145-163	12-20-96	12-20-96	TRACT R11 (TRACT R115 - PB 88/154-159)
E-23	IEE	PB 78/145-163	12-20-96	12-20-96	TRACT R13
E-24	IEE	PB 78/145-163	12-20-96	12-20-96	TRACT R14
E-25	IEE	PB 78/145-163	12-20-96	12-20-96	TRACT R15
E-26	IEE	PB 78/145-163	12-20-96	12-20-96	TRACT R16
E-27	IEE	PB 78/145-163	12-20-96	12-20-96	TRACT R17
E-28	IEE	PB 78/145-163	12-20-96	12-20-96	TRACT R18
E-29	IEE	PB 78/145-163	12-20-96	12-20-96	TRACT R19
E-33	IEE	PB 78/145-163	12-20-96	12-20-96	TRACT R23
E-34	IEE	PB 78/145-163	12-20-96	12-20-96	TRACT R24
E-35	IEE	PB 78/145-163	12-20-96	12-20-96	TRACT R25
E-45	IEE	PB 78/145-163	12-20-96	12-20-96	TRACT R35
E-46	IEE	PB 78/145-163	12-20-96	12-20-96	TRACT R36
E-47	IEE	PB 78/145-163	12-20-96	12-20-96	TRACT R37
E-48	IEE	PB 78/145-163	12-20-96	12-20-96	TRACT R38
E-49	IEE	PB 78/145-163	12-20-96	12-20-96	TRACT R39
E-50	IEE	PB 78/145-163	12-20-96	12-20-96	TRACT R40
E-51	IEE	PB 78/145-163	12-20-96	12-20-96	TRACT R41
E-52	IEE	PB 78/145-163	12-20-96	12-20-96	TRACT R42
E-53	IEE	PB 78/145-163	12-20-96	12-20-96	TRACT R43
E-54	IEE	PB 78/145-163	12-20-96	12-20-96	TRACT R44
E-55	IEE	PB 78/145-163	12-20-96	12-20-96	TRACT R45
E-56	IEE	PB 78/145-163	12-20-96	12-20-96	TRACT R46
E-70	DE	PB 78/145-163	12-20-96	12-20-96	
E-71	CCP	PB 78/145-163	12-20-96	12-20-96	
E-72	DDP	PB 78/145-163	12-20-96	12-20-96	
E-73	DDP	PB 78/145-163	12-20-96	12-20-96	
E-74	WAE	PB 78/145-163	12-20-96	12-20-96	TRACT A
E-82	WAE	PB 78/145-163	12-20-96	12-20-96	
E-83	WAE	PB 78/145-163	12-20-96	12-20-96	
E-86	ORB	9580/1281-1291	12-12-96	12-20-96	BLANKET EASEMENT AGREEMENT
E-87	ORB	9580/1292-1309	12-12-96	12-20-96	TEMPORARY CONSTRUCTION EASEMENT AGREEMENT
E-131	ORB	11110/359-364	5-05-99	5-14-99	PDS, DRAINAGE, OUTFALL EASE, W/TOWN OF JUP.
E-132	ORB	11161/938-1951	5-19-99	6-9-99	RECREATIONAL USE EASEMENT WITH ABACOA

**EASEMENT RELEASE TABLE**

TRACT	RECORDING DATA	REMARKS	DATE
SF1	RELEASE 9583/1552-1553	E-86	12-23-96
MP1, MP2	RELEASE 9582/1319-1320	E-86	09-10-97
R1-R14, R-11-R17	RELEASE 10228/1093-1095	E-86	11-19-97
R18-R36, R40-R50			
RWB	RELEASE 10407/1713-1714	E-86	05-13-98
TCT, TCR	RELEASE 10776/195-196	E-87	12-23-96
PLAT 10	RELEASE 11394/1219-1221	ABACOA TOWN CENTER PLAT NO. 2	10-12-99
J, J	RELEASE 11818/156-158	ABACOA A REPLAT OF TRACTS GF1 & GF2	06-05-00

19	01-12-21	JAF	UPDATE FACILITIES MAP
17	11-20-13	JAF	REVISE BORDER
16	02-16-06	MCI	NPBCID FACILITIES UPDATE
12	02-16-06	JCD	NPBCID FACILITIES UPDATE
8	MAR 03	STAFF	ADD ABACOA TOWN CENTER PLAT NO.3
7	MAR 02	JTC	5 YEAR NPBCID FACILITIES UPDATE ADD C-4 THRU C-9, CC-1, CC-2, OS-1, W-2A
6	2-25-02	MBS	ADD E-136, E-137, PLAT 17, 18, ADDED TO NOTE 1. P/O REL. 12050/574-578, 12147/929-931, 12236/1059-1060, 12463/1396-1399, 12583/54-56, 12643/1402-1418
3	9-29-00	JTC	ADD P/O REL. 11208/1657-1659, 11394/1219-1221 11407/1783-1785, 1431/1077-1079, 11818/156-158 E-131 THRU E-135, NOTE 8 AND 9
2	6-19-00	JTC	ADD PLAT 10

FIELD: -	DATE: 06-15-06
DRAWN: SFRN STAFF	
DESIGNED: -	
APPROVED: C.A.R.	
SCALE: AS SHOWN	

**NORTHERN PALM BEACH COUNTY IMPROVEMENT DISTRICT**  
 FACILITIES MAP  
 UNIT OF DEVELOPMENT NO. 9A  
 SECTIONS 13, 14, 23 & 24,  
 T. 41 S., R. 42 E.  
 PALM BEACH COUNTY, FLORIDA

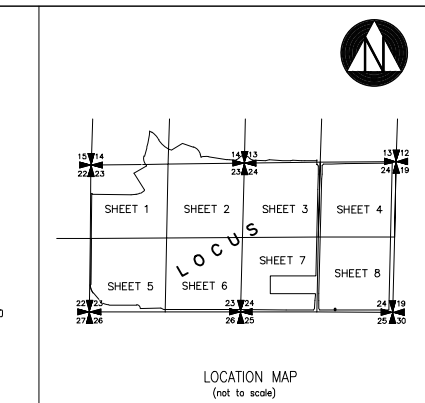
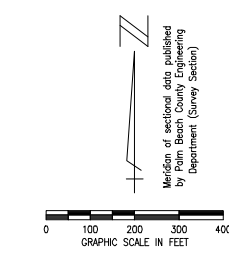
SHEET 2 OF 8  
EXHIBIT 9A (2)



NOTES:

- PORTIONS OF THE CANAL EASEMENTS LYING WITHIN THIS UNIT OF DEVELOPMENT AS RECORDED ON APRIL 3, 1979 IN OFFICIAL RECORD BOOK 3035, PAGES 737-738 (AS SHOWN ON FACILITIES MAP UNIT OF DEVELOPMENT NO. 9) WERE RELEASED ON AUGUST 30, 1996 BY OFFICIAL RECORD BOOK 9680, PAGES 1223-1225 AND RECORDED ON DECEMBER 20, 1996. FULL RELEASE OF EASEMENT BY OFFICIAL RECORD BOOK 12463, PAGES 1409-1401, AND RECORDED ON APRIL 17, 2001.
- NOTICE AND DISCLOSURE BY NPBCID FOR UNITS OF DEVELOPMENT NUMBER 9A AND 9B EXECUTED APRIL 6, 1995 AND RECORDED ON APRIL 10, 1995 IN OFFICIAL RECORD BOOK 8694, PAGES 1286-1296. AMENDED NOTICE AND DISCLOSURE FOR UNIT 9B EXECUTED ON APRIL 15, 1996 AND RECORDED ON APRIL 22, 1996 IN OFFICIAL RECORD BOOK 9224, PAGES 222-239. AMENDED NOTICE AND DISCLOSURE FOR UNIT 9A EXECUTED ON APRIL 15, 1996 AND RECORDED ON APRIL 22, 1996 IN OFFICIAL RECORD BOOK 9224, PAGES 268-285.
- AGREEMENT BETWEEN NPBCID AND ABACOA DEVELOPMENT COMPANY FOR ENSURING THE UNIFORMITY IN THE APPLICATIONS OF CODES FOR LAND USE CLASSIFICATIONS FOR UNITS 9A AND 9B EXECUTED ON JULY 17, 1996 AND RECORDED ON SEPTEMBER 29, 1996 IN OFFICIAL RECORD BOOK 9457, PAGES 1073-1093.
- AGREEMENT BETWEEN NPBCID AND PALM BEACH COUNTY FOR INCLUSION OF REAL PROPERTY WITHIN UNITS OF DEVELOPMENT NO. 9A AND 9B EXECUTED ON SEPTEMBER 16, 1997 AND RECORDED ON OCTOBER 1, 1997 IN OFFICIAL RECORD BOOK 10012, PAGES 627-634.
- AGREEMENT BETWEEN NPBCID AND THE JOHN D. AND CATHERINE T. McARTHUR FOUNDATION FOR INCLUSION OF REAL PROPERTY WITHIN UNITS OF DEVELOPMENT NO. 9A AND 9B EXECUTED ON OCTOBER 22, 1997 AND RECORDED ON OCTOBER 27, 1997 IN OFFICIAL RECORD BOOK 10053, PAGES 1266-1273.
- INTERLOCAL AGREEMENT FOR ABACOA DEVELOPER IMPROVEMENTS BETWEEN THE LOXAHATCHEE RIVER ENVIRONMENTAL CONTROL DISTRICT AND NPBCID TO COOPERATE AND ASSIST EACH OTHER IN PROVIDING THE WASTEWATER SERVICES TO THE ABACOA MIXED-USE DEVELOPMENT EXECUTED DECEMBER 3, 1997 AND RECORDED ON JANUARY 27, 1998 IN OFFICIAL RECORD BOOK 10197, PAGES 1747-1762.
- MAINTENANCE AGREEMENT BETWEEN NPBCID AND ABACOA PROPERTY OWNERS ASSEMBLY, INC. EXECUTED APRIL 8, 1998 AND RECORDED ON APRIL 10, 1998 IN OFFICIAL RECORD BOOK 10336, PAGES 89-90.
- FIRST AMENDMENT TO THE SEPTEMBER 16TH, 1996 AGREEMENT BETWEEN NORTHERN AND ABACOA DEVELOPMENT COMPANY, EXECUTED ON MARCH 7, 2003 AND RECORDED ON MARCH 11, 2003 IN OFFICIAL RECORD BOOK 14809, PAGES 1321-1324.

No.	REMARKS
OS2A	6" WIDE WEIR @ IE 8.55 WITH RECTANGULAR BLEEDER 5.73' WIDE @ IE 8.84
OS-4A	20" WIDE WEIR @ IE 7.5 WITH (4.5' W X 1.02' H) RECTANGULAR BLEEDER @ IE 5.9
C-4	(2) 48" RCP WITH MITERED END SECTIONS @ IE 5.5
C-5	(2) 88' LF OF 48" X 76" ELLIPTICAL RCP WITH ENDWALLS @ IE 6.6
C-7	(2) 108' LF OF 48" X 76" ELLIPTICAL RCP WITH ENDWALLS @ IE 4.56
C-9	123' LF OF 48" RCP WITH MITERED END SECTIONS @ IE 5.5
C-10	44' LF OF 60" RCP WITH ENDWALLS @ IE 2.5
C-11	50' LF OF 60" RCP WITH ENDWALLS @ IE 3.0
C-12	60' LF OF 48" RCP WITH ENDWALLS @ IE 3.0
C-13	186' LF OF 54" RCP WITH ENDWALLS @ IE 1.0
C-14	184' LF OF 60" RCP WITH ENDWALLS @ IE 0.0
C-15	16' LF OF 72" RCP WITH ENDWALLS @ IE 2.5
C-16	16' LF OF 84" RCP WITH ENDWALLS @ IE 2.5
C-17	16' LF OF 60" RCP WITH ENDWALLS @ IE 2.5
CC-1	88' LF OF 24" X 38" CRITER CROSSING @ IE 9.2
CC-2	88' LF OF 24" X 38" CRITER CROSSING
CC-3	90' LF OF 30" RCP @ IE 10.60
CC-4	74' LF OF 30" RCP @ IE 11.50
CC-5	72' LF OF 30" RCP @ IE 10.30
C-18	50' LF OF 72" CMP WITH ENDWALLS @ IE 3.0
OD-2	OBSERVATION DECK (GREENWAY)
OD-4	OBSERVATION DECK (GREENWAY)
EF-6	ENTRY FEATURE (FREDRICK SMALL RD/MILITARY TRAIL) NORTH
EF-7	ENTRY FEATURE (FREDRICK SMALL RD/MILITARY TRAIL) SOUTH
OS-3	50" WIDE WEIR AT 87.5 WITH (2' W X 0.5' H) RECTANGULAR BLEEDER
C-29	52' LF OF 42" RCP @ IE 0.5



No.	PLAT BOOK/PAGES	ABACOA PLAT NO.	TITLE
1	PB 78/145-163	ABACOA PLAT NO. 1	
2	PB 81/137-144	NEWHAVEN-7A AT ABACOA	
7	PB 85/7-8	ABACOA-REPLAT OF TRACT WK5	
8	PB 85/25-27	ABACOA TOWN CENTER PLAT NO. 1	
11	PB 87/148-153	ABACOA-REPLAT OF TRACT WK1-4	
18	PB 92/197-198	ABACOA-REPLAT OF PARCELS WK3A, WK3B, WK3C	
19	PB 87/41-42	ABACOA-REPLAT OF TRACT WK6	
23	PB 114/16-20	ABACOA - REPLAT OF TRACT WK4A	

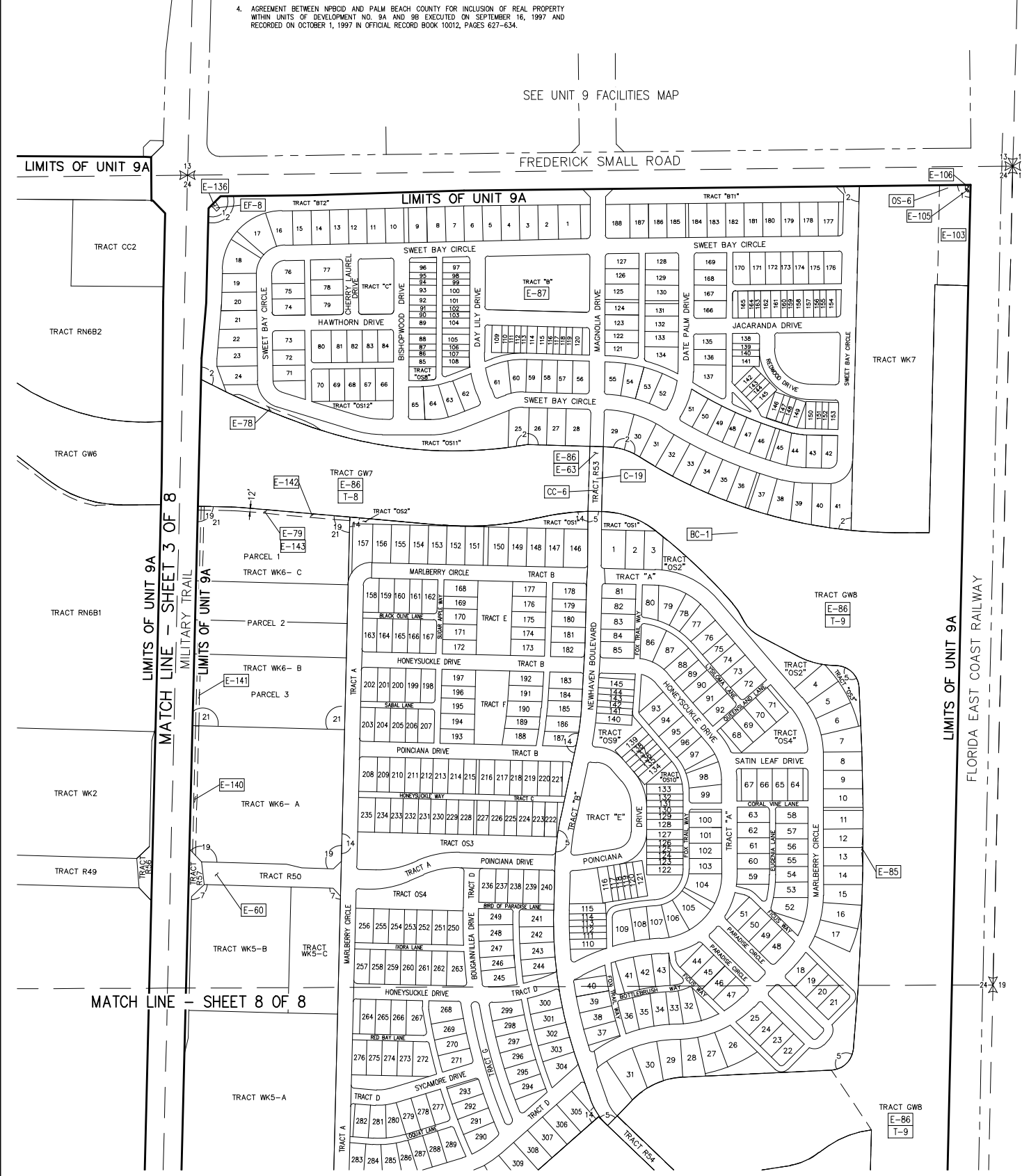
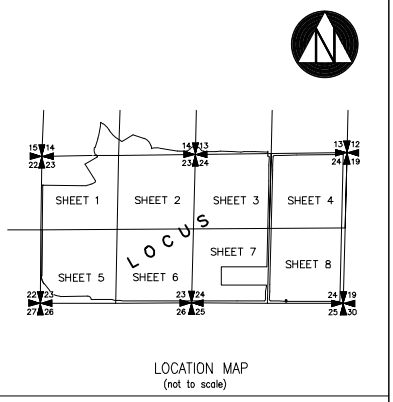
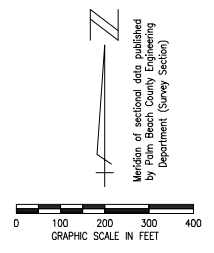
No.	RECORDING DATA	INST. DATE	RECORDING DATE	REMARKS
T-4	ORB 10441/1196-1197	6-02-98	6-04-98	TRACT GW3
T-5	ORB 10441/1196-1197	6-02-98	6-04-98	TRACT GW4
T-6	ORB 10441/1196-1197	6-02-98	6-04-98	TRACT GW5
T-7	ORB 10441/1196-1197	6-02-98	6-04-98	TRACT GW6

No.	RECORDING DATA	INST. DATE	RECORDING DATE	REMARKS
E-1	ORB 9567/793-831	12-20-96	12-12-96	TRACT A
E-2	ORB 9567/793-831	12-20-96	12-12-96	TRACT CW3
E-3	ORB 9567/793-831	12-20-96	12-12-96	TRACT GW4
E-4	ORB 9567/793-831	12-20-96	12-12-96	TRACT GW5
E-5	ORB 9567/793-831	12-20-96	12-12-96	TRACT GW6
E-6	ORB 9567/793-831	12-20-96	12-12-96	TRACT R47
E-7	ORB 9567/793-831	12-20-96	12-12-96	TRACT R48
E-8	ORB 9567/793-831	12-20-96	12-12-96	TRACT R49
E-9	ORB 9567/793-831	12-20-96	12-12-96	TRACT R51
E-10	ORB 9567/793-831	12-20-96	12-12-96	TRACT R52
E-11	ORB 9567/793-831	12-20-96	12-20-96	
E-12	ORB 9567/793-831	12-20-96	12-20-96	
E-13	ORB 9567/793-831	12-20-96	12-20-96	
E-14	ORB 9567/793-831	12-20-96	12-20-96	
E-15	ORB 9567/793-831	12-20-96	12-20-96	
E-16	ORB 9567/793-831	12-20-96	12-20-96	
E-17	ORB 9567/793-831	12-20-96	12-20-96	
E-18	ORB 9567/793-831	12-20-96	12-20-96	
E-19	ORB 9567/793-831	12-20-96	12-20-96	
E-20	ORB 9567/793-831	12-20-96	12-20-96	
E-21	ORB 9567/793-831	12-20-96	12-20-96	
E-22	ORB 9567/793-831	12-20-96	12-20-96	
E-23	ORB 9567/793-831	12-20-96	12-20-96	
E-24	ORB 9567/793-831	12-20-96	12-20-96	
E-25	ORB 9567/793-831	12-20-96	12-20-96	
E-26	ORB 9567/793-831	12-20-96	12-20-96	
E-27	ORB 9567/793-831	12-20-96	12-20-96	
E-28	ORB 9567/793-831	12-20-96	12-20-96	
E-29	ORB 9567/793-831	12-20-96	12-20-96	
E-30	ORB 9567/793-831	12-20-96	12-20-96	
E-31	ORB 9567/793-831	12-20-96	12-20-96	
E-32	ORB 9567/793-831	12-20-96	12-20-96	
E-33	ORB 9567/793-831	12-20-96	12-20-96	
E-34	ORB 9567/793-831	12-20-96	12-20-96	
E-35	ORB 9567/793-831	12-20-96	12-20-96	
E-36	ORB 9567/793-831	12-20-96	12-20-96	
E-37	ORB 9567/793-831	12-20-96	12-20-96	
E-38	ORB 9567/793-831	12-20-96	12-20-96	
E-39	ORB 9567/793-831	12-20-96	12-20-96	
E-40	ORB 9567/793-831	12-20-96	12-20-96	
E-41	ORB 9567/793-831	12-20-96	12-20-96	
E-42	ORB 9567/793-831	12-20-96	12-20-96	
E-43	ORB 9567/793-831	12-20-96	12-20-96	
E-44	ORB 9567/793-831	12-20-96	12-20-96	
E-45	ORB 9567/793-831	12-20-96	12-20-96	
E-46	ORB 9567/793-831	12-20-96	12-20-96	
E-47	ORB 9567/793-831	12-20-96	12-20-96	
E-48	ORB 9567/793-831	12-20-96	12-20-96	
E-49	ORB 9567/793-831	12-20-96	12-20-96	
E-50	ORB 9567/793-831	12-20-96	12-20-96	
E-51	ORB 9567/793-831	12-20-96	12-20-96	
E-52	ORB 9567/793-831	12-20-96	12-20-96	
E-53	ORB 9567/793-831	12-20-96	12-20-96	
E-54	ORB 9567/793-831	12-20-96	12-20-96	
E-55	ORB 9567/793-831	12-20-96	12-20-96	
E-56	ORB 9567/793-831	12-20-96	12-20-96	
E-57	ORB 9567/793-831	12-20-96	12-20-96	
E-58	ORB 9567/793-831	12-20-96	12-20-96	
E-59	ORB 9567/793-831	12-20-96	12-20-96	
E-60	ORB 9567/793-831	12-20-96	12-20-96	
E-61	ORB 9567/793-831	12-20-96	12-20-96	
E-62	ORB 9567/793-831	12-20-96	12-20-96	
E-63	ORB 9567/793-831	12-20-96	12-20-96	
E-64	ORB 9567/793-831	12-20-96	12-20-96	
E-65	ORB 9567/793-831	12-20-96	12-20-96	
E-66	ORB 9567/793-831	12-20-96	12-20-96	
E-67	ORB 9567/793-831	12-20-96	12-20-96	
E-68	ORB 9567/793-831	12-20-96	12-20-96	
E-69	ORB 9567/793-831	12-20-96	12-20-96	
E-70	ORB 9567/793-831	12-20-96	12-20-96	
E-71	ORB 9567/793-831	12-20-96	12-20-96	
E-72	ORB 9567/793-831	12-20-96	12-20-96	
E-73	ORB 9567/793-831	12-20-96	12-20-96	
E-74	ORB 9567/793-831	12-20-96	12-20-96	
E-75	ORB 9567/793-831	12-20-96	12-20-96	
E-76	ORB 9567/793-831	12-20-96	12-20-96	
E-77	ORB 9567/793-831	12-20-96	12-20-96	
E-78	ORB 9567/793-831	12-20-96	12-20-96	
E-79	ORB 9567/793-831	12-20-96	12-20-96	
E-80	ORB 9567/793-831	12-20-96	12-20-96	
E-81	ORB 9567/793-831	12-20-96	12-20-96	
E-82	ORB 9567/793-831	12-20-96	12-20-96	
E-83	ORB 9567/793-831	12-20-96	12-20-96	
E-84	ORB 9567/793-831	12-20-96	12-20-96	
E-85	ORB 9567/793-831	12-20-96	12-20-96	
E-86	ORB 9567/793-831	12-20-96	12-20-96	
E-87	ORB 9567/793-831	12-20-96	12-20-96	
E-88	ORB 9567/793-831	12-20-96	12-20-96	
E-89	ORB 9567/793-831	12-20-96	12-20-96	
E-90	ORB 9567/793-831	12-20-96	12-20-96	
E-91	ORB 9567/793-831	12-20-96	12-20-96	
E-92	ORB 9567/793-831	12-20-96	12-20-96	
E-93	ORB 9567/793-831	12-20-96	12-20-96	
E-94	ORB 9567/793-831	12-20-96	12-20-96	
E-95	ORB 9567/793-831	12-20-96	12-20-96	
E-96	ORB 9567/793-831	12-20-96	12-20-96	
E-97	ORB 9567/793-831	12-20-96	12-20-96	
E-98	ORB 9567/793-831	12-20-96	12-20-96	
E-99	ORB 9567/793-831	12-20-96	12-20-96	
E-100	ORB 9567/793-831	12-20-96	12-20-96	
E-101	ORB 9567/793-831	12-20-96	12-20-96	
E-102	ORB 9567/793-831	12-20-96	12-20-96	
E-103	ORB 9567/793-831	12-20-96	12-20-96	
E-104	ORB 9567/793-831	12-20-96	12-20-96	
E-105	ORB 9567/793-831	12-20-96	12-20-96	
E-106	ORB 9567/793-831	12-20-96	12-20-96	
E-107	ORB 9567/793-831	12-20-96	12-20-96	
E-108	ORB 9567/793-831	12-20-96	12-20-96	
E-109	ORB 9567/793-831	12-20-96	12-20-96	
E-110	ORB 9567/793-831	12-20-96	12-20-96	
E-111	ORB 9567/793-831	12-20-96	12-20-96	
E-112	ORB 9567/793-831	12-20-96	12-20-96	
E-113	ORB 9567/793-831	12-20-96	12-20-96	
E-114	ORB 9567/793-831	12-20-96	12-20-96	
E-115	ORB 9567/793-831	12-20-96	12-20-96	
E-116	ORB 9567/793-831	12-20-96	12-20-96	
E-117	ORB 9567/793-831	12-20-96	12-20-96	
E-118	ORB 9567/793-831	12-20-96	12-20-96	
E-119	ORB 9567/793-831	12-20-96	12-20-96	
E-120	ORB 9567/793-831	12-20-96	12-20-96	
E-121	ORB 9567/793-831	12-20-96	12-20-96	
E-122	ORB 9567/793-831	12-20-96	12-20-96	
E-123	ORB 9567/793-831	12-20-96	12-20-96	
E-124	ORB 9567/793-831	12-20-96	12-20-96	
E-125	ORB 9567/793-831	12-20-96	12-20-96	
E-126	ORB 9567/793-831	12-20-96	12-20-96	
E-127	ORB 9567/793-831	12-20-96	12-20-96	
E-128	ORB 9567/793-831	12-20-96	12-20-96	
E-129	ORB 9567/793-831			

**NOTES:**

- PORTIONS OF THE CANAL EASEMENTS LYING WITHIN THIS UNIT OF DEVELOPMENT AS RECORDED ON APRIL 3, 1979 IN OFFICIAL RECORD BOOK 3035, PAGES 737-738 (AS SHOWN ON FACILITIES MAP UNIT OF DEVELOPMENT UNIT NO. 9) WERE RELEASED ON AUGUST 30, 1996 BY OFFICIAL RECORD BOOK 9580, PAGES 1223-1225 AND RECORDED ON DECEMBER 20, 1996. FULL RELEASE OF EASEMENT BY OFFICIAL RECORD BOOK 12463, PAGES 1400-1401, AND RECORDED ON APRIL 17, 2001.
- NOTICE AND DISCLOSURE BY NPBCID FOR UNITS OF DEVELOPMENT NUMBER 9A AND 9B EXECUTED APRIL 6, 1995 AND RECORDED ON APRIL 10, 1995 IN OFFICIAL RECORD BOOK 8694, PAGES 1286-1288 AMENDED NOTICE AND DISCLOSURE FOR UNIT 9B EXECUTED ON APRIL 15, 1996 AND RECORDED ON APRIL 22, 1996 IN OFFICIAL RECORD BOOK 9224, PAGES 222-239. AMENDED NOTICE AND DISCLOSURE FOR UNIT 9A EXECUTED ON APRIL 15, 1996 AND RECORDED ON APRIL 22, 1996 IN OFFICIAL RECORD BOOK 9224 PAGES 268-285.
- AGREEMENT BETWEEN NPBCID AND ABACOA DEVELOPMENT COMPANY FOR ENSURING THE UNIFORMITY IN THE APPLICATIONS OF CODES FOR LAND USE CLASSIFICATIONS FOR UNITS 9A AND 9B EXECUTED ON JULY 17, 1996 AND RECORDED ON SEPTEMBER 29, 1996 IN OFFICIAL RECORD BOOK 9457, PAGES 1073-1093.
- AGREEMENT BETWEEN NPBCID AND PALM BEACH COUNTY FOR INCLUSION OF REAL PROPERTY WITHIN UNITS OF DEVELOPMENT NO. 9A AND 9B EXECUTED ON SEPTEMBER 16, 1997 AND RECORDED ON OCTOBER 1, 1997 IN OFFICIAL RECORD BOOK 10012, PAGES 627-634.
- AGREEMENT BETWEEN NPBCID AND THE JOHN D. AND CATHERINE T. McARTHUR FOUNDATION FOR INCLUSION OF REAL PROPERTY WITHIN UNITS OF DEVELOPMENT NO. 9A AND 9B EXECUTED ON OCTOBER 22, 1997 AND RECORDED ON OCTOBER 27, 1997 IN OFFICIAL RECORD BOOK 10053, PAGES 1266-1273.
- INTERLOCAL AGREEMENT FOR ABACOA DEVELOPER IMPROVEMENTS BETWEEN THE LOKAHATCHEE RIVER ENVIRONMENTAL CONTROL DISTRICT AND NPBCID TO COOPERATE AND ASSIST EACH OTHER IN PROVIDING THE WASTEWATER SERVICES TO THE ABACOA MIXED-USE DEVELOPMENT EXECUTED DECEMBER 3, 1997 AND RECORDED ON JANUARY 27, 1998 IN OFFICIAL RECORD BOOK 10197, PAGES 1747-1762.
- MAINTENANCE AGREEMENT BETWEEN NPBCID AND ABACOA PROPERTY OWNERS ASSEMBLY, INC. EXECUTED APRIL 6, 1998 AND RECORDED ON APRIL 10, 1998 IN OFFICIAL RECORD BOOK 10336, PAGES 89-90.
- FIRST AMENDMENT TO THE SEPTEMBER 16TH, 1996 AGREEMENT BETWEEN NORTHERN AND ABACOA DEVELOPMENT COMPANY, EXECUTED ON MARCH 7, 2003 AND RECORDED ON MARCH 11, 2003 IN OFFICIAL RECORD BOOK 14909, PAGES 1321-1324.

No.	REMARKS
OS-6	(3) 72" RCP WITH (3) 4"x0.8" RECT BLEEDER ELEV=6.0, 11.25"x3.1" WEIR ELEV=7.9, OVERFLOW ELEV=11.02
C-19	44 LF 84" RCP WITH ENDMALLS E 2.0
CC-6	72 LF 30" RCP IE 9.3
BC-1	BRIDGE CROSSING (GREENWAY)
EF-8	ENTRY FEATURE (MILITARY TRAIL/FREDRICK SMALL RD) SOUTHEAST



No.	PLAT BOOK/PAGES	TITLE
1	PB 78/145-163	ABACOA PLAT NO. 1
2	PB 81/137-144	NEWHAVEN-7A AT ABACOA
3	PB 84/113-119	NEWHAVEN-7B-PHASE 1 AT ABACOA
7	PB 85/7-8	ABACOA-REPLAT OF TRACT WKS
14	PB 89/100-105	NEWHAVEN-7B-PHASE 2 AT ABACOA
19	PB 87/41-42	ABACOA - REPLAT OF TRACT WKS
21	PB 104/183-184	GREENWAY PROFESSIONAL CENTER

No.	RECORDING DATA	INST. DATE	RECORDING DATE	REMARKS
T-9	ORB 10447/1196-1197	6-02-98	6-04-98	TRACT CW7
T-8	ORB 10447/1196-1197	6-02-98	6-04-98	TRACT CW8

- LEGEND:**
- WME denotes Water Management Easement
  - WMME denotes Water Management Maintenance
  - IEE denotes Ingress-Egress Easement
  - GCAE denotes Golf Course Access Easement
  - WMAE denotes Water Management Access Easement
  - E denotes Utility Easement
  - DE denotes Drainage Easement
  - CE denotes Conservation Easement
  - PE denotes Preservation Easement
  - PT denotes Wetland Preservation Tract
  - WPA denotes Wetland Preservation Area WMT
  - MT denotes Water Management Tract
  - LOA denotes Land Owners Agreement
  - NPBCID denotes Northern Palm Beach County Improvement District
  - NGVD denotes National Geodetic Vertical Datum
  - IE denotes Invert Elevation (NGVD)
  - OMP denotes Corrugated Metal Pipe
  - RCP denotes Reinforced Concrete Pipe
  - IP-1 denotes Irrigation Pump
  - E-1 denotes District Easement
  - T-1 denotes District Owned Tract
  - F-1 denotes Flashboard Riser
  - W-1 denotes Weir
  - PS-1 denotes Pump Station
  - C-1 denotes Culvert
  - TE-1 denotes Telemetry Catwalk with Metritape
  - OS-2 denotes Operable Gate Structure
  - RW-1 denotes Recharge Well
  - MW-1 denotes Hazardous Material Monitoring Well
  - WQ-1 denotes Water Quality Sampling Station
  - SG-1 denotes Staff Gauge
  - RG-1 denotes Rainfall Gauge
  - Flow direction denotes Flow direction
  - NPBCID Unit Boundary denotes NPBCID Unit Boundary
  - NPBCID Fee Simple Tract denotes NPBCID Fee Simple Tract
  - NPBCID Easements denotes NPBCID Easements
  - Palm Beach County Section Lines denotes Palm Beach County Section Lines

No.	TYPE	RECORDING DATA	INST. DATE	RECORDING DATE	REMARKS
E-60	IEE	PB 78/145-163		12-20-96	TRACT R50
E-63	IEE	PB 78/145-163		12-20-96	TRACT R53
E-78	WMME	PB 78/145-163		12-20-96	
E-79	WMME	PB 78/145-163		12-20-96	
E-85	WMME	PB 78/145-163		12-20-96	
E-86	ORB	9580/1281-1291	12-12-96	12-20-96	BLANKET EASEMENT AGREEMENT
E-87	ORB	9580/1292-1308	12-12-96	12-20-96	TEMP. CONSTRUCTION EASEMENT AGREEMENT
E-88	ORB	9580/1310-1317	12-12-96	12-20-96	CANAL & TEMP. CONSTR. EASEMENT AGREEMENT
E-103	WME	ORB 10691/250-257	10-08-98	10-14-98	
E-105	ORB	10822/114-118	12-16-98	12-17-98	SIGN EASEMENT
E-106	ORB	10822/114-118	12-16-98	12-17-98	SIGN ACCESS EASEMENT
E-136	ORB	11426/98-101	10-11-99	10-29-99	SIGN EASEMENT
E-140	TCE	ORB 16244/1721	11-24-03	11-26-03	TEMPORARY CONSTRUCTION EASEMENT
E-141	TCE	ORB 16244/1729	11-21-03	11-26-03	TEMPORARY CONSTRUCTION EASEMENT
E-142	WMME	PB 87/41-42	01-25-00	01-25-00	
E-143	WMME	PB 104/183-184		05-08-05	

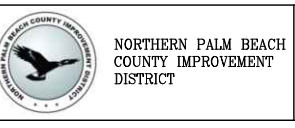
TRACT	RECORDING DATA	REMARKS	DATE
* R1-R4 R11-R17, R19-R38, R40-R50	RELEASE 10228/1093-1095	E-86	11-19-97
** RW7B, WK6	RELEASE 10374/340-341	E-88	02-25-98
** WK6	RELEASE 10594/1623-1624	E-88	08-19-98
** WKS	RELEASE 10594/1727-1728	E-87	08-19-98
** WK7	RELEASE 11407/1783-1785	E-88	10-19-99
			11-20-00

No.	DATE	BY	REVISION
19	01-12-21	JMF	UPDATE FACILITIES MAP
17	11-20-13	JMF	REVISE BORDER
14	02-20-06	MCB	NPBCID FACILITIES UPDATE
13	12-19-05	QMR	ADD GREENWAY PROFESSIONAL CENTER
12	02-16-05	JMF	NPBCID FACILITIES UPDATE
9	08-21-04	CAR	ADD REPLAT OF TRACT WK-6
8	01-06-04	CAR	ADD TEMPORARY CONST. EASEMENTS
7	MAR 02	JTC	5 YEAR NPBCID FACILITIES UPDATE
			ADD E-6, C-19, CC-6, BC-1, E-8
6	2-25-02	MES	ADD E-136, E-137, PLAT 17, 15, ADDED TO NOTE 1, P/O REL. 12050/574-578, 12147/929-931, 12236/1059-1060, 12463/1398-1399, 12593/54-56, 12643/1402-1418
4	8-07-01	JTC	ADD PLAT 11 THRU 15
3	9-29-00	JTC	ADD P/O REL. 11208/1657-1659, 11394/1219-1221, 11407/1783-1785, 1431/1077-1079, 11818/156-158, E-131 THRU E-135, NOTE 8 AND 9

Data File: T:\\_12 Jun 2021 - 10:16am  
 Current Plotfile: E:\Color  
 Path Name: C:\Users\jflizgrah\Documents\James Files\WORK DWG\WFD09000 NPBCID UNIT 9A Facilities Map 9A\UD09AFM04.dwg

INFORMATION SHOWN HEREON DOES NOT CONSTITUTE, NOR DOES IT REPRESENT, A SURVEY OF THE SUBJECT PREMISES.

FIELD: -  
 DRAWN: SFRN STAFF  
 DESIGNED: -  
 APPROVED: C.A.R.  
 SCALE: AS SHOWN



**NORTHERN PALM BEACH COUNTY IMPROVEMENT DISTRICT**  
 FACILITIES MAP  
 UNIT OF DEVELOPMENT NO. 9A  
 SECTIONS 13, 14, 23 & 24,  
 T. 41 S., R. 42 E.  
 PALM BEACH COUNTY, FLORIDA

DATE: 06-15-06  
 SHEET 4 OF 8  
 EXHIBIT 9A (4)



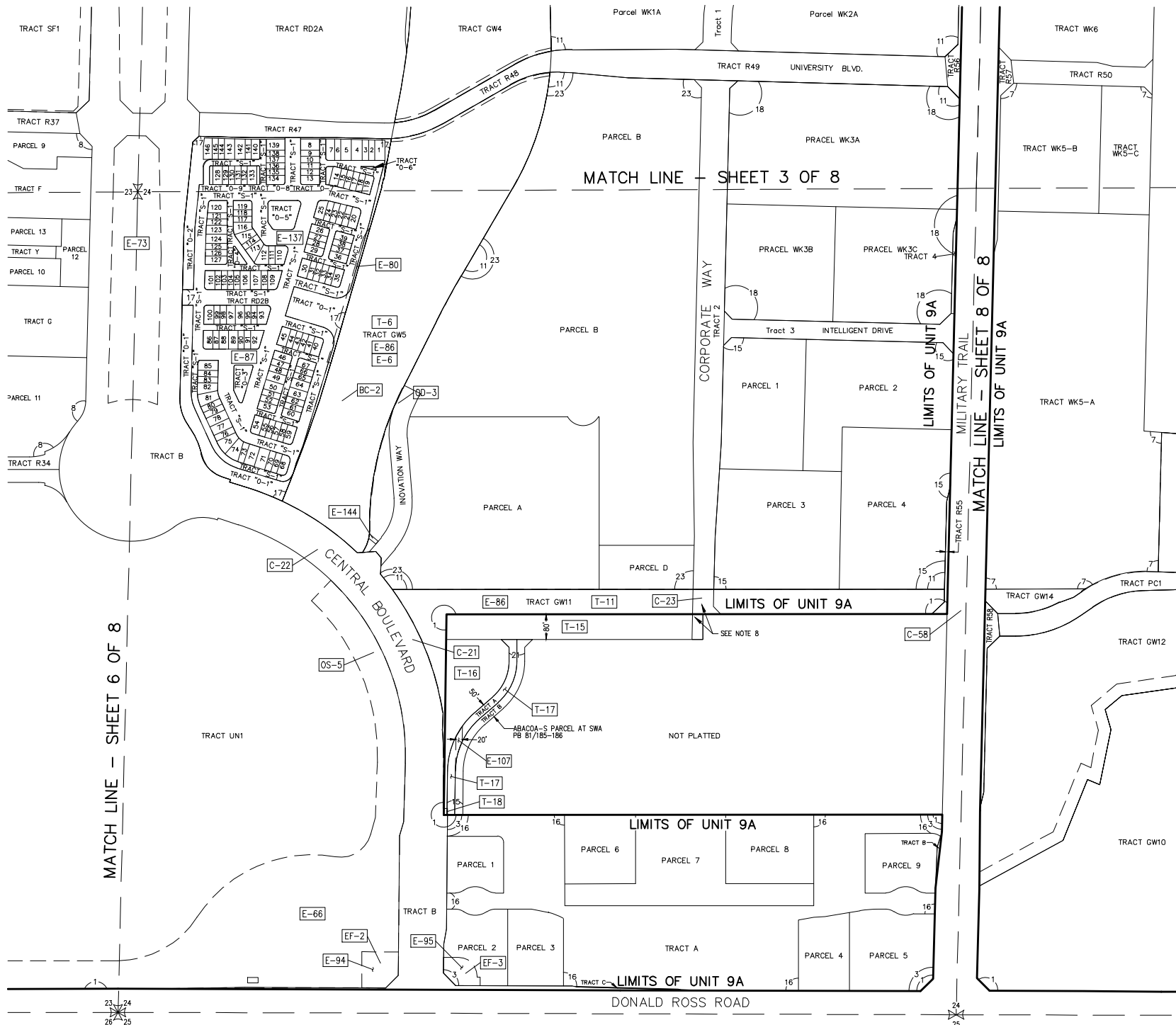
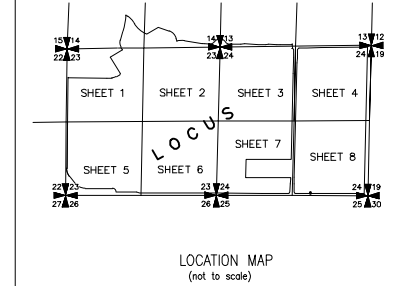
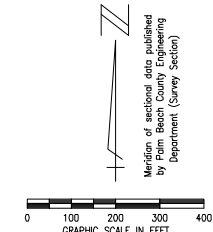




**NOTES:**

- PORTIONS OF THE CANAL EASEMENTS LYING WITHIN THIS UNIT OF DEVELOPMENT AS RECORDED ON APRIL 3, 1979 IN OFFICIAL RECORD BOOK 3035, PAGES 737-738 (AS SHOWN ON FACILITIES MAP UNIT OF DEVELOPMENT UNIT NO. 9) WERE RELEASED ON AUGUST 30, 1996 BY OFFICIAL RECORD BOOK 9580, PAGES 1223-1225 AND RECORDED ON DECEMBER 20, 1996. FULL RELEASE OF EASEMENT BY OFFICIAL RECORD BOOK 12463, PAGES 1400-1401, AND RECORDED ON APRIL 17, 2001.
- NOTICE AND DISCLOSURE BY NPBCD FOR UNITS OF DEVELOPMENT NUMBER 9A AND 9B EXECUTED APRIL 6, 1995 AND RECORDED ON APRIL 10, 1995 IN OFFICIAL RECORD BOOK 8694, PAGES 1286-1296. AMENDED NOTICE AND DISCLOSURE FOR UNIT 9B EXECUTED ON APRIL 15, 1996 AND RECORDED ON APRIL 22, 1996 IN OFFICIAL RECORD BOOK 9224, PAGES 222-239. AMENDED NOTICE AND DISCLOSURE FOR UNIT 9A EXECUTED ON APRIL 15, 1996 AND RECORDED ON APRIL 22, 1996 IN OFFICIAL RECORD BOOK 9224, PAGES 268-285.
- AGREEMENT BETWEEN NPBCD AND ABACOA DEVELOPMENT COMPANY FOR ENSURING THE UNIFORMITY IN THE APPLICATIONS OF CODES FOR LAND USE CLASSIFICATIONS FOR UNITS 9A AND 9B EXECUTED ON JULY 17, 1996 AND RECORDED ON SEPTEMBER 29, 1996 IN OFFICIAL RECORD BOOK 9457, PAGES 1073-1093.
- AGREEMENT BETWEEN NPBCD AND PALM BEACH COUNTY FOR INCLUSION OF REAL PROPERTY WITHIN UNITS NO. 9A AND 9B EXECUTED ON SEPTEMBER 16, 1997 AND RECORDED ON OCTOBER 1, 1997 IN OFFICIAL RECORD BOOK 10012, PAGES 627-634.
- AGREEMENT BETWEEN NPBCD AND THE JOHN D. AND CATHERINE T. McARTHUR FOUNDATION FOR INCLUSION OF REAL PROPERTY WITHIN UNITS OF DEVELOPMENT NO. 9A AND 9B EXECUTED ON OCTOBER 22, 1997 AND RECORDED ON OCTOBER 27, 1997 IN OFFICIAL RECORD BOOK 10053, PAGES 1266-1273.
- INTERLOCAL AGREEMENT FOR ABACOA DEVELOPER IMPROVEMENTS BETWEEN THE Loxahatchee River Environmental Control District and NPBCD TO COOPERATE AND ASSIST EACH OTHER IN PROVIDING THE WASTEWATER SERVICES TO THE ABACOA MIXED-USE DEVELOPMENT EXECUTED DECEMBER 3, 1997 AND RECORDED ON JANUARY 27, 1998 IN OFFICIAL RECORD BOOK 10197, PAGES 1747-1762.
- MAINTENANCE AGREEMENT BETWEEN NPBCD AND ABACOA PROPERTY OWNERS ASSEMBLY, INC. EXECUTED APRIL 6, 1998 AND RECORDED ON APRIL 10, 1998 IN OFFICIAL RECORD BOOK 10336, PAGES 89-90.
- SPECIAL WARRANTY DEED BETWEEN NPBCD AND TOWN OF JUPITER EXECUTED MARCH 2, 2000 AND RECORDED ON MARCH 3, 2000 IN OFFICIAL RECORD BOOK 11640, PAGES 429-432.
- FIRST AMENDMENT TO THE SEPTEMBER 16TH, 1996 AGREEMENT BETWEEN NORTHERN AND ABACOA DEVELOPMENT COMPANY, EXECUTED ON MARCH 7, 2003 AND RECORDED ON MARCH 11, 2003 IN OFFICIAL RECORD BOOK 14909, PGS. 1321-1324.

No.	REMARKS
OS-5	4.5 WIDE WEIR @ ELEVATION 12.20 WITH (2.33' X 1.2') RECTANGULAR BLEEDER @ E 11.0'.
C-21	(2) 237 LF 48" RCP IE 2.5W @ 0.0E
C-22	232 LF 36" RCP IE 7.0 (PLUGGED)
C-23	68 LF 84" RCP WITH HEADWALLS E 2.0
C-58	(2) 207 LF 54" RCP WITH HEADWALLS E 1.7E & 2.2W
EF-2	ENTRY FEATURE (DONALD ROSS RD/CENTRAL BLVD) WEST
EF-3	ENTRY FEATURE (DONALD ROSS RD/CENTRAL BLVD) EAST
BC-2	BRIDGE CROSSING (GREENWAYS)
OD-3	OBSERVATION DECK (GREENWAYS)



No.	PLAT BOOK/PAGES	RECORDED DATE	TITLE
1	PB 78/145-163	ABACOA PLAT NO. 1	
3	PB 83/9-10	ABACOA PLAZA	
7	PB 85/7-8	ABACOA - REPLAT OF TRACT WK5	
8	PB 85/25-27	ABACOA TOWN CENTER PLAT NO 1	
11	PB 87/148-153	ABACOA - REPLAT OF TRACT WK1-4	
15	PB 89/112-113	ABACOA - REPLAT OF TRACT WK30	
16	PB 90/135-137	ABACOA PLAZA-REPLAT OF TRACT A	
17	PB 90/185-189	OSCEOLA WOODS	
18	PB 92/197-198	ABACOA - REPLAT OF PARCELS WK3A, WK3B, WK3C	
21	PB 81/185-186	ABACOA - "S" PARCEL AT SWA	
23	PB 114/16-20	ABACOA - REPLAT OF TRACT WK4A	

No.	RECORDING DATA	INST. DATE	RECORDING DATE	TITLE	REMARKS
T-6	ORB 10441/1196-1197	6-02-98	6-04-98	TRACT GW5	
T-11	ORB 10441/1196-1197	6-02-98	6-04-98	TRACT GW11	
T-15	ORB 10930/1835-1839	12-14-98	2-12-99		
T-16	ORB 10930/1840-1844	11-25-98	2-12-99		
T-17	ORB 10930/1845-1852	12-14-98	2-12-99		
T-18	ORB 10930/1861-1865	12-14-98	2-12-99		

- LEGEND:**
- WME denotes Water Management Easement
  - WMME denotes Water Management Maintenance
  - IEE denotes Ingress-Egress Easement
  - GCAE denotes Golf Course Access Easement
  - WMAE denotes Water Management Access Easement
  - E denotes Utility Easement
  - DE denotes Drainage Easement
  - CE denotes Conservation Easement
  - PE denotes Preservation Easement
  - PTI denotes Wetland Preservation Tract
  - WPA denotes Wetland Preservation Area WMT
  - MT denotes Water Management Tract
  - LOA denotes Land Owners Agreement
  - NPBCD denotes Northern Palm Beach County Improvement District
  - NGVD denotes National Geodetic Vertical Datum
  - IE denotes Invert Elevation (NGVD)
  - CMP denotes Corrugated Metal Pipe
  - RCP denotes Reinforced Concrete Pipe
  - PC denotes Recorded Plat Corner
  - 22/27 denotes Palm Beach County Section Corner
  - 22/27/26 denotes Palm Beach County Section Quarter Corner
  - IP-1 denotes Irrigation Pump
  - E-1 denotes District Easement
  - T-1 denotes District Owned Tract
  - F-1 denotes Flashboard Riser
  - W-1 denotes Weir
  - PS-1 denotes Pump Station
  - C-1 denotes Culvert
  - TE-1 denotes Telemetry Catwalk with Meritape
  - OS-2 denotes Operable Gate Structure
  - RW-1 denotes Recharge Well
  - MW-1 denotes Hazardous Material Monitoring Well
  - WQ-1 denotes Water Quality Sampling Station
  - SG-1 denotes Staff Gauge
  - RG-1 denotes Rainfall Gauge
  - Flow direction symbol denotes Flow direction
  - NPBCD Unit Boundary symbol denotes NPBCD Unit Boundary
  - NPBCD Fee Simple Tract symbol denotes NPBCD Fee Simple Tract
  - NPBCD Easements symbol denotes NPBCD Easements
  - Palm Beach County Section Lines symbol denotes Palm Beach County Section Lines

No.	TYPE	RECORDING DATA	INST. DATE	RECORDING DATE	REMARKS
E-6	CE	ORB 9587/793-831	11-20-96	12-12-97	CONSERVATION EASEMENT TRACT GW5
E-66	WME	PB 78/145-163	12-20-96		P/O RELEASE 10053/1264-1267
E-73	DDE	PB 78/145-163	12-20-96		DRAINAGE RETENTION EASEMENT
E-80	WMME	PB 78/145-163	12-20-96		
E-86	CE	ORB 9580/1281-1291	12-12-96	12-20-96	BLANKET EASEMENT AGREEMENT
E-87	ORB	9580/1292-1308	12-12-96	12-20-96	TEMP. CONSTRUCTION EASEMENT AGREEMENT
E-94	ORB	10145/1488-1505	12-15-97	12-19-97	ENTRY TOWER EASEMENT
E-95	ORB	10145/1506-1513	12-15-97	12-19-97	ENTRY TOWER EASEMENT
E-107	DE	ORB 10930/1845-1852	12-14-98	2-12-99	CONSERVATION EASEMENT TRACT GW5
E-137	IEE	PB 90/185-189	06-07-01		OVER TRACT S-1
E-144	ORB	24631/902-908	10-26-11	11-03-11	12 FOOT ACCESS EASEMENT

TRACT	RECORDING DATA	EASEMENT	REMARKS	DATE
* UNI	RELEASE 9625/1505-1506	E-86		01-22-97
* R1-R4,R11-R17, R19-R36,R40-R50	RELEASE 10228/1093-1095	E-86		11-19-97
** CC1	RELEASE 10776/195-196	E-87		11-18-98
** WK3	RELEASE 10594/1727-1728	E-87		08-19-98
** WK4	RELEASE 10515/1386-1387	E-87		07-08-98

No.	DATE	BY	REVISION
19	01-12-21	JAF	UPDATE FACILITIES MAP
18	08-11-17	JAF	ADD ABACOA - REPLAT OF TRACT WK4A & 12' ACCESS EASEMENT
17	11-20-13	JAF	REVISE BORDER
13	02-26-98	MCS	NPBCD FACILITIES UPDATE
12	02-16-06	JCD	NPBCD FACILITIES UPDATE
7	MAR 02	JTC	5 YEAR NPBCD FACILITIES UPDATE ADD W-5, C-21 THRU C-23, C-58, EF-2, EF-3, BC-2, OS-3
6	2-25-02	MBS	ADD E-136, E-137, PLAT 17, 18, ADDED TO NOTE 1. P/O REL 12050/574-576, 12147/929-931, 12236/1058-1060, 12463/1386-1399, 12583/54-56, 12643/1402-1418
5	8-13-01	CAB	ADD PLAT 16
4	8-07-01	JTC	ADD PLATS 11 THRU 15
3	9-29-00	JTC	ADD P/O REL 11208/1657-1659, 11394/1219-1221 11407/1783-1785, 1431/1077-1079, 11818/156-158, E-131 THRU E-135, NOTE 8 AND 9

Data Time : Tue, 12 Jun 2012 10:24am  
 Current Path : C:\Users\jilzgerad\Documents\jilzgerad\Projects\BFC\BFC\NPBCD\UNIT 9A\Facilities Map 9A\UP046W07.dwg  
 Path Name : C:\Users\jilzgerad\Documents\jilzgerad\Projects\BFC\BFC\NPBCD\UNIT 9A\Facilities Map 9A\UP046W07.dwg

INFORMATION SHOWN HEREON DOES NOT CONSTITUTE, NOR DOES IT REPRESENT, A SURVEY OF THE SUBJECT PREMISES.

FIELD: -  
 DRAWN: SFRN STAFF  
 DESIGNED: -  
 APPROVED: C.A.R.  
 SCALE: AS SHOWN



**NORTHERN PALM BEACH COUNTY IMPROVEMENT DISTRICT**  
 FACILITIES MAP  
 UNIT OF DEVELOPMENT NO. 9A  
 SECTIONS 13, 14, 23 & 24,  
 T. 41 S., R. 42 E.  
 PALM BEACH COUNTY, FLORIDA

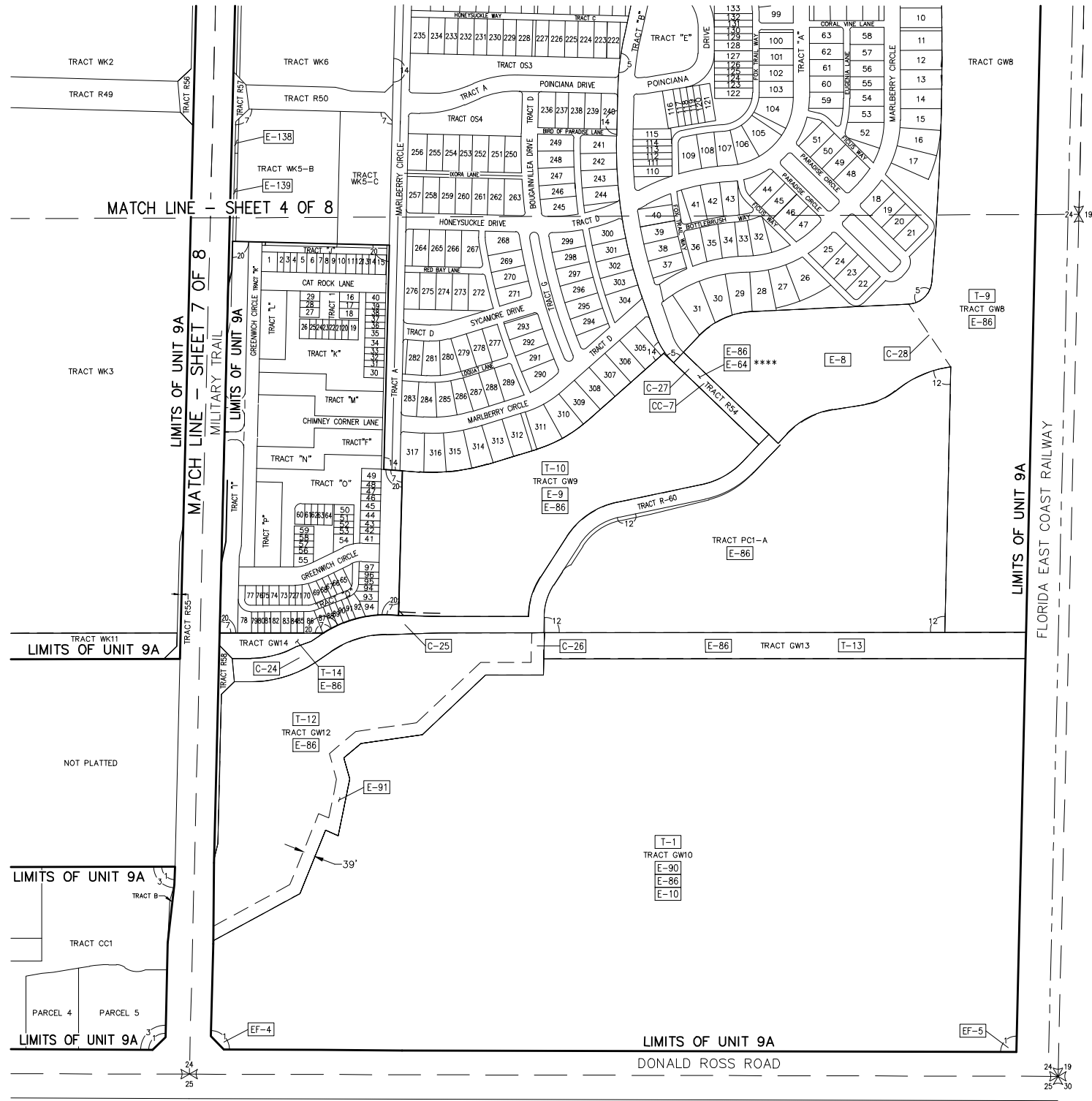
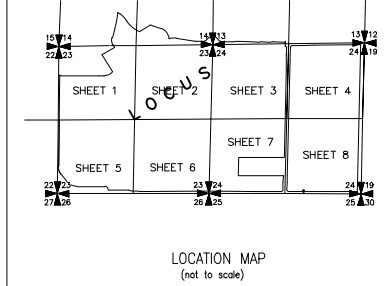
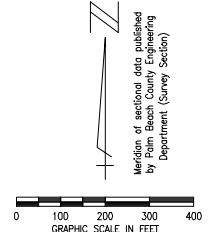
DATE: 06-15-06  
 SHEET 7 OF 8  
 EXHIBIT 9A (7)



NOTES:

- PORTIONS OF THE CANAL EASEMENTS LYING WITHIN THIS UNIT OF DEVELOPMENT AS RECORDED ON APRIL 3, 1979 IN OFFICIAL RECORD BOOK 3035, PAGES 737-738 (AS SHOWN ON FACILITIES MAP UNIT OF DEVELOPMENT UNIT NO. 9) WERE RELEASED ON AUGUST 30, 1996 BY OFFICIAL RECORD BOOK 9586, PAGES 1223-1225 AND RECORDED ON DECEMBER 20, 1996 FULL RELEASE OF EASEMENT BY OFFICIAL RECORD BOOK 12463, PAGES 1400-1401, AND RECORDED ON APRIL 17, 2001.
- NOTICE AND DISCLOSURE BY NPBCID FOR UNITS OF DEVELOPMENT NUMBER 9A AND 9B EXECUTED APRIL 6, 1995 AND RECORDED ON APRIL 10, 1995 IN OFFICIAL RECORD BOOK 8694, PAGES 1286-1296. AMENDED NOTICE AND DISCLOSURE FOR UNIT 9B EXECUTED ON APRIL 15, 1996 AND RECORDED ON APRIL 22, 1996 IN OFFICIAL RECORD BOOK 9224, PAGES 222-239. AMENDED NOTICE AND DISCLOSURE FOR UNIT 9A EXECUTED ON APRIL 15, 1996 AND RECORDED ON APRIL 22, 1996 IN OFFICIAL RECORD BOOK 9224, PAGES 268-285.
- AGREEMENT BETWEEN NPBCID AND ABACOA DEVELOPMENT COMPANY FOR ENSURING THE UNIFORMITY IN THE APPLICATIONS OF CODES FOR LAND USE CLASSIFICATIONS FOR UNITS 9A AND 9B EXECUTED ON JULY 17, 1996 AND RECORDED ON SEPTEMBER 29, 1996 IN OFFICIAL RECORD BOOK 9457, PAGES 1073-1093.
- AGREEMENT BETWEEN NPBCID AND PALM BEACH COUNTY FOR INCLUSION OF REAL PROPERTY WITHIN UNITS OF DEVELOPMENT NO. 9A AND 9B EXECUTED ON SEPTEMBER 16, 1997 AND RECORDED ON OCTOBER 1, 1997 IN OFFICIAL RECORD BOOK 10012, PAGES 627-634.
- AGREEMENT BETWEEN NPBCID AND THE JOHN D. AND CATHERINE T. MacARTHUR FOUNDATION FOR INCLUSION OF REAL PROPERTY WITHIN UNITS OF DEVELOPMENT NO. 9A AND 9B EXECUTED ON OCTOBER 22, 1997 AND RECORDED ON OCTOBER 27, 1997 IN OFFICIAL RECORD BOOK 10053, PAGES 1266-1273.
- INTERLOCAL AGREEMENT FOR ABACOA DEVELOPER IMPROVEMENTS BETWEEN THE LOXAHATCHEE RIVER ENVIRONMENTAL CONTROL DISTRICT AND NPBCID TO COOPERATE AND ASSIST EACH OTHER IN PROVIDING THE WASTEWATER SERVICES TO THE ABACOA MIXED-USE DEVELOPMENT EXECUTED DECEMBER 3, 1997 AND RECORDED ON JANUARY 27, 1998 IN OFFICIAL RECORD BOOK 10197, PAGES 1747-1762.
- MAINTENANCE AGREEMENT BETWEEN NPBCID AND ABACOA PROPERTY OWNERS ASSEMBLY, INC. EXECUTED APRIL 8, 1998 AND RECORDED ON APRIL 10, 1998 IN OFFICIAL RECORD BOOK 10336, PAGES 89-90.
- FIRST AMENDMENT TO THE SEPTEMBER 16TH, 1996 AGREEMENT BETWEEN NORTHERN AND ABACOA DEVELOPMENT COMPANY, EXECUTED ON MARCH 7, 2003 AND RECORDED ON MARCH 11, 2003 IN OFFICIAL RECORD BOOK 14909, PAGES 1321-1324.

No.	REMARKS
C-24	108 LF 84" RCP IE 2.0 WITH 20 LF 84" CMP COLLAR
C-25	72 LF 84" RCP WITH HEADWALLS IE 2.0
C-26	16 LF 84" RCP WITH HEADWALLS IE 2.0
C-27	44 LF 84" RCP WITH HEADWALLS IE 2.0
C-28	(2) 16 LF 72" RCP WITH HEADWALLS IE 2.0
CC-7	72 LF 30" RCP E 9.3 (CRITER CROSSING)
EF-4	ENTRY FEATURE (DONALD ROSS RD/MILITARY TRAIL)
EF-5	ENTRY FEATURE (DONALD ROSS RD/ALTERNATE ATA)



No.	PLAT BOOK/PAGES	RECORDED DATE	TITLE
1	PB 78/145-163	ABACOA PLAT NO. 1	
3	PB 83/9-10	ABACOA PLAZA	
5	PB 84/113-119	NEWHAVEN-7B-PHASE 1 AT ABACOA	
7	PB 85/7-8	ABACOA-REPLAT OF TRACT WKS	
12	PB 87/158-159	ABACOA-REPLAT OF TRACT PC T-A	
14	PB 89/100-105	NEWHAVEN-7B-PHASE 2 AT ABACOA	
20	PB 106/154-157	GREENWICH-REPLAT OF TRACT WKS-A	

No.	RECORDING DATA	INST. DATE	RECORDING DATE	REMARKS
T-1	ORB 9855/1467-1468	6-19-97	6-23-97	TRACT GW10
T-9	ORB 10441/1196-1197	6-02-98	6-04-98	TRACT GW5
T-10	ORB 10441/1196-1197	6-02-98	6-04-98	TRACT GW9
T-12	ORB 10441/1196-1197	6-02-98	6-04-98	TRACT GW12
T-13	ORB 10441/1196-1197	6-02-98	6-04-98	TRACT GW13
T-14	ORB 10441/1196-1197	6-02-98	6-04-98	TRACT GW14

- LEGEND:
- WME denotes Water Management Easement
  - WMME denotes Water Management Maintenance
  - IEE denotes Ingress-Egress Easement
  - CAAE denotes Golf Course Access Easement
  - WMAE denotes Water Management Access Easement
  - E denotes Utility Easement
  - DE denotes Drainage Easement
  - CE denotes Conservation Easement
  - PE denotes Preservation Easement
  - PT denotes Wetland Preservation Tract
  - WPA denotes Wetland Preservation Area WMT
  - MT denotes Water Management Tract
  - LOA denotes Land Owners Agreement
  - NPBCID denotes Northern Palm Beach County Improvement District
  - NGVD denotes National Geodetic Vertical Datum
  - IE denotes Invert Elevation (NGVD)
  - CMP denotes Corrugated Metal Pipe
  - RCP denotes Reinforced Concrete Pipe

- denotes Recorded Plat Corner
- denotes Palm Beach County Section Corner
- denotes Palm Beach County Section Quarter Corner
- IP-1 denotes Irrigation Pump
- E-1 denotes District Easement
- T-1 denotes District Owned Tract
- F-1 denotes Flashboard Riser
- W-1 denotes Weir
- PS-1 denotes Pump Station
- C-1 denotes Culvert
- TE-1 denotes Telemetry Catwalk with Metritape
- OS-2 denotes Operable Gate Structure
- RW-1 denotes Recharge Well
- MW-1 denotes Hazardous Material Monitoring Well
- WQ-1 denotes Water Quality Sampling Station
- SC-1 denotes Staff Gauge
- RG-1 denotes Rainfall Gauge
- denotes Flow direction
- denotes NPBCID Unit Boundary
- denotes NPBCID Fee Simple Tract
- denotes NPBCID Easements
- denotes Palm Beach County Section Lines

No.	TYPE	RECORDING DATA	INST. DATE	RECORDING DATE	REMARKS
E-8	CE	ORB 9567/793-831	12-12-96	12-12-96	CONSERVATION EASEMENT PART OF TRACT GW8
E-9	CE	ORB 9567/793-831	12-12-96	12-12-96	CONSERVATION EASEMENT TRACT GW9
E-10	CE	ORB 9567/793-831	12-12-96	12-12-96	CONSERVATION EASEMENT TRACT GW10
E-64	IEE	PB 78/145-163	12-20-96	12-20-96	TRACT RS4
E-86	CE	ORB 9580/1281-1291	12-12-96	12-20-96	BLANKET EASEMENT AGREEMENT
E-87	CE	ORB 9580/1292-1308	12-12-96	12-20-96	TEMPORARY CONSTRUCTION EASEMENT AGREEMENT
E-88	CE	ORB 9580/1310-1317	12-12-96	12-20-96	CANAL & TEMP. CONSTR. EASEMENT AGREEMENT
E-90	CE	ORB 9737/1101-1110	05-28-96	04-09-97	CONSERVATION EASEMENT TRACT GW10
E-91	CE	ORB 9737/1111-1122	05-28-96	04-09-97	39' CONSERVATION EASEMENT
E-138	CE	ORB 16244/1705	11-25-03	11-26-03	TEMPORARY CONSTRUCTION EASEMENT AGREEMENT
E-139	CE	ORB 16244/1713	11-24-03	11-26-03	TEMPORARY CONSTRUCTION EASEMENT AGREEMENT

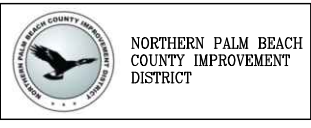
TRACT	RECORDING DATA	REMARKS	DATE
R1-R4,R11-R17	RELEASE 10228/1093-1095	E-86	11-19-97
R19-R38,R40-R50	RELEASE 10594/1727-1728	E-87	08-19-98
WKS	RELEASE 10374/340-341	E-88	02-25-98
RN7B	RELEASE 13363/1171-1173	E-64	01-30-02
TRACT RS4	RELEASED IN 9580/1292-130	RELEASED IN 15787/483-484	08-27-03

No.	DATE	BY	REVISION
19	01-12-21	JAF	UPDATE FACILITIES MAP
17	11-20-13	JAF	REVISE BORDER
13	02-20-08	MBS	NPBCID FACILITIES UPDATE
12	02-16-05	JCD	NPBCID FACILITIES UPDATE
11	OCT 04	STAFF	ADDED REPLAT OF TRACT WKS-A
10	JAN 04	STAFF	ADDED TEMPORARY CONSTRUCTION EASEMENT
9	OCT 03	STAFF	ADDED RELEASE OF EASEMENT
8	OCT 02	STAFF	ADDED RELEASE OF TRACT RS4
7	MAR 02	JTC	5 YEAR NPBCID FACILITIES UPDATE
6	2-25-02	MBS	ADD E-136, E-137, PLAT 17, 18, ADDED TO NOTE 1, P/O REL. 12050/574-578, 12141/828-931, 12236/1096-1098, 12463/1388-1399, 12593/54-56, 12643/1402-1418
4	8-07-01	JTC	ADD PLATS 11 THRU 15
3	9-27-00	JTC	ADD P/O REL. 11208/163-165, 11394/1318-1321, 11407/1783-1786, 1431/1077-1079, 11818/156-158, E-131 THRU E-135, NOTE 8 AND 9

Path Name : C:\Users\jflizzera\Documents\Jamies Files\WORK DWG\NPBCID UNIT 9A\Facilities Map 9A\U09A\FACMAP08.dwg

INFORMATION SHOWN HEREON DOES NOT CONSTITUTE, NOR DOES IT REPRESENT, A SURVEY OF THE SUBJECT PREMISES.

FIELD: -
DRAWN: SFRN STAFF
DESIGNED: -
APPROVED: C.A.R.
SCALE: AS SHOWN



NORTHERN PALM BEACH COUNTY IMPROVEMENT DISTRICT  
 FACILITIES MAP  
 UNIT OF DEVELOPMENT NO. 9A  
 SECTIONS 13, 14, 23 & 24,  
 T. 41 S., R. 42 E.  
 PALM BEACH COUNTY, FLORIDA

DATE: 06-13-06  
 SHEET 8 OF 8  
 EXHIBIT 9A (8)